

WAAS CH <b>42809</b> <b>W04A</b>	APP CRS <b>036°</b>	Rwy ldg <b>10000</b> TDZE <b>1189</b> Apt Elev <b>1189</b>
--	------------------------	--

RNAV (GPS) Y RWY 4

GRANT COUNTY INTL (MWH)

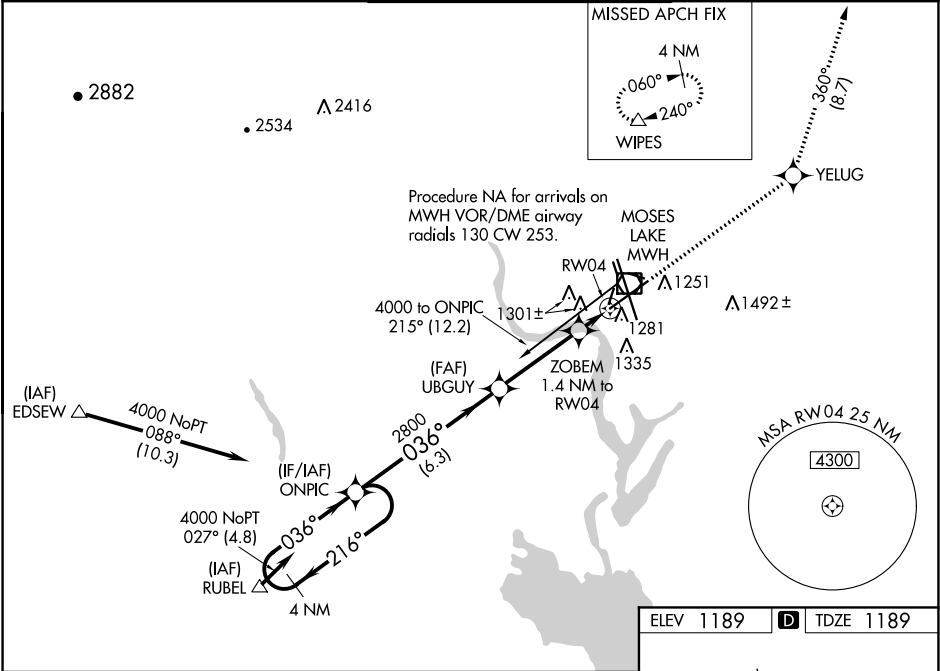
⚠

⚠

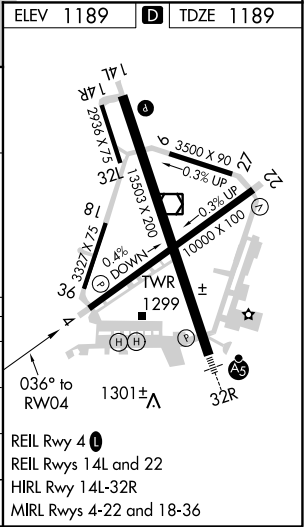
For uncompensated Baro-VNAV systems, LNAV/VNAV NA below -17°C (2°F) or above 36°C (96°F). DME/DME RNP-0.3 NA. When local altimeter setting not received, use Ephrata altimeter setting and increase all DA 36 feet and increase all MDA 40 feet, increase LNAV/VNAV all Cats visibility, and LNAV Cat C and D visibility 1⁄8 mile. Baro-VNAV NA when using Ephrata altimeter setting.

MISSED APPROACH: Climb to 4000 direct YELUG and on track 360° to WIPES and hold.

ATIS <b>119.05</b>	GRANT COUNTY APP CON ★ <b>126.4 379.95</b>	GRANT COUNTY TOWER ★ <b>118.25 (CTAF) 0 257.8 (EAST)</b> <b>128.0 257.8 (WEST)</b>	GND CON <b>121.9</b>	UNICOM <b>122.95</b>
-----------------------	---	--	-------------------------	-------------------------



4 NM Holding Pattern		ONPIC	UBGUY	ZOBEM 1.4 NM to RW04	RW04
4000 ← 216° 036° →		2800	2800	*1680	
GP 3.00° TCH 50		6.3 NM	3.5 NM	1.4 NM	
CATEGORY	A	B	C	D	
LPV DA	1389-3⁄4 200 (200-3⁄4)				
LNAV/VNAV DA	1442-3⁄4 253 (300-3⁄4)				
LNAV MDA	1540-1 351 (400-1)				
CIRCLING	1660-1	471 (500-1)	1660-1½ 471 (500-1½)	1740-2 551 (600-2)	



NW-1, 31 DEC 2020 to 28 JAN 2021

NW-1, 31 DEC 2020 to 28 JAN 2021