

WAAS CH 70410 W22A	APP CRS 216°	Rwy Idg 10000 TDZE 1166 Apt Elev 1189
--	------------------------	--

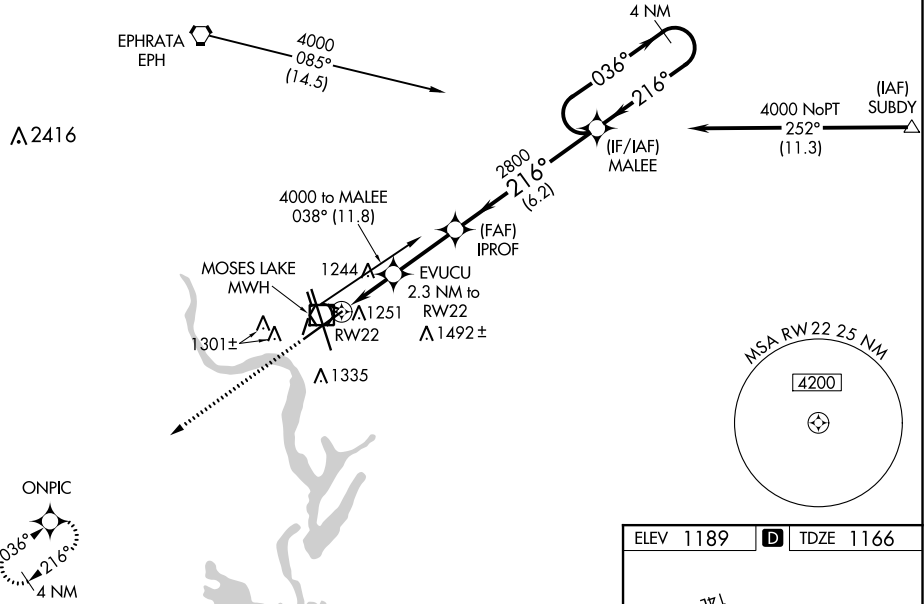
RNAV (GPS) Y RWY 22
GRANT COUNTY INTL (MWH)

⚠ For uncompensated Baro-VNAV systems, LNAV/VNAV NA below -17°C (2°F) or above 36°C (96°F). DME/DME RNP-0.3 NA. Baro-VNAV and VDP NA when using Ephrata altimeter setting. When local altimeter setting not received, use Ephrata altimeter setting and increase all DA 36 feet and all MDA 40 feet, increase LNAV/VNAV all Cats visibility and LNAV Cats C and D visibility 1/8 mile.

MISSED APPROACH: Climb to 4000 direct ONPIC and hold.

ATIS 119.05	GRANT COUNTY APP CON ★ 126.4 379.95	GRANT COUNTY TOWER ★ 118.25 (CTAF) 0 257.8 (EAST) 128.0 257.8 (WEST)	GND CON 121.9	UNICOM 122.95
-----------------------	---	--	-------------------------	-------------------------

Procedure NA for arrivals at EPH VORTAC on airway radials 060 CW 135.



4000	ONPIC	MALEE				4 NM Holding Pattern
↑	✦	EVUCU 2.3 NM to RW22	I PROF 2800			036° → 4000
*LNAV only		*0.9 NM to RW22	2800	216°	← 216°	
		1920*	2800			GP 3.00° TCH 50
CATEGORY		A	B	C	D	
LPV DA			1366-¾	200 (200-¾)		
LNAV/VNAV DA			1429-⅞	263 (300-⅞)		
LNAV MDA			1500-1	334 (400-1)		
CIRCLING		1660-1	471 (500-1)	1660-1½ 471 (500-1½)	1740-2 551 (600-2)	

ELEV 1189 **D** TDZE 1166

REIL Rwy 4 0
REIL Rwy 14L and 22
HIRL Rwy 14L-32R
MIRL Rwy 4-22 and 18-36

NW-1, 31 DEC 2020 to 28 JAN 2021

NW-1, 31 DEC 2020 to 28 JAN 2021