

WAAS CH 82416 W05A	APP CRS 046°	Rwy Idg TDZE Apt Elev	5320 16 17
--	------------------------	-----------------------------	---------------------------------------

RNAV (GPS) Y RWY 5

SOUTHWEST OREGON RGNL (OTH)

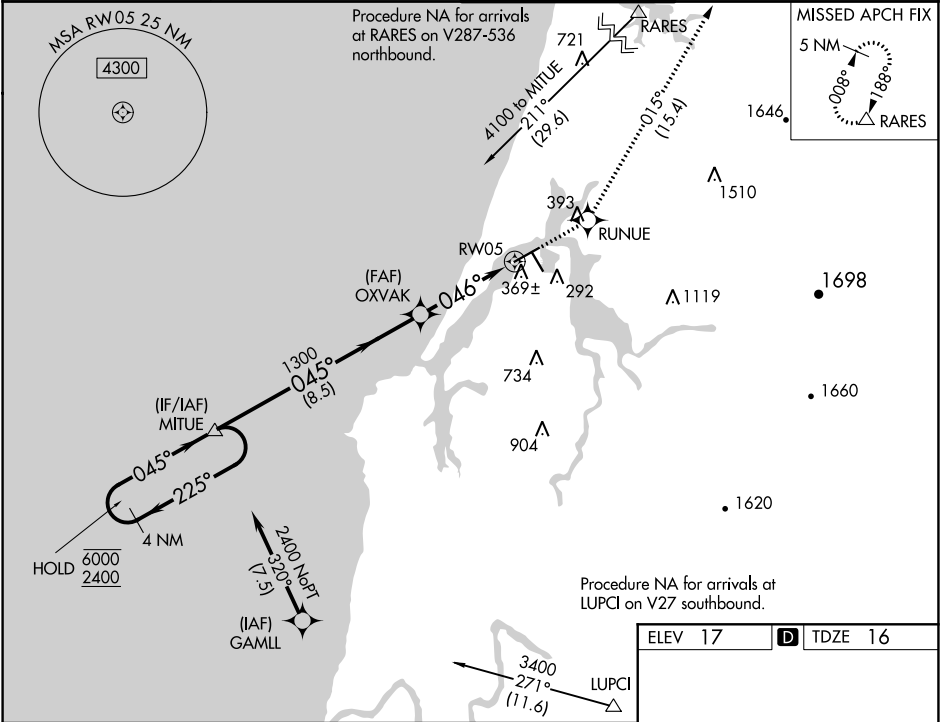
RNP APCH.

▼ Circling Rwy 13, 31 NA at night. For uncompensated Baro-VNAV systems, LNAV/VNAV NA below -2°C or above 54°C. For inop ALS, increase LPV all Cats visibility to ½ SM, LNAV/VNAV all Cats visibility to 1½ SM, and increase LNAV Cat C/D visibility to 1¾ SM.

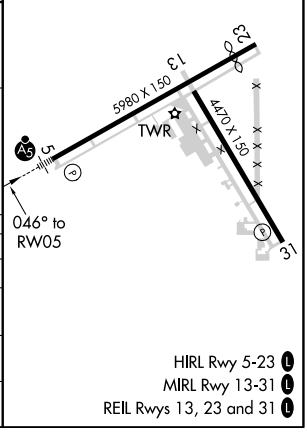
MALSR
A5

MISSED APPROACH: Climb to 6000 direct RUNUE and on track 015° to RARES and hold, continue climb-in-hold to 6000.

AWOS-3PT 135.075	SEATTLE CENTER 127.55 254.35	NORTH BEND TOWER* 118.45 (CTAF) 0	GND CON 127.1
----------------------------	--	---	-------------------------



4 NM Holding Pattern		MITUE		OXVAK		RUNUE		RARES	
6000 ← 225°		2400 → 045°		1300		*1.7 NM to RW05		*LNAV only	
GP 3.00°		TCH 51		1300		046°		RW05	
A		B		C		D			
LPV DA		319-1½		303 (400-½)					
LNAV/VNAV DA		550-1¾		534 (600-1¾)					
LNAV MDA		620-½		604 (700-½)		620-1¾		604 (700-1¾)	
CIRCLING		680-1		820-1		1100-3		1160-3	
		663 (700-1)		803 (900-1)		1083 (1100-3)		1143 (1200-3)	



NW-1, 31 DEC 2020 to 28 JAN 2021

NW-1, 31 DEC 2020 to 28 JAN 2021