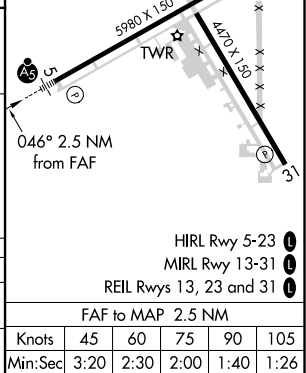
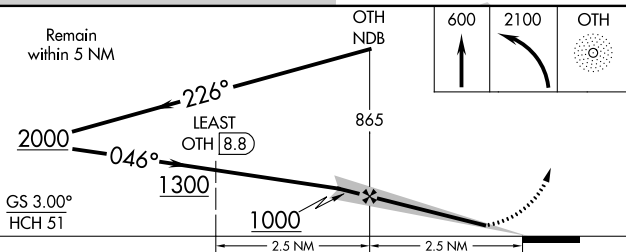
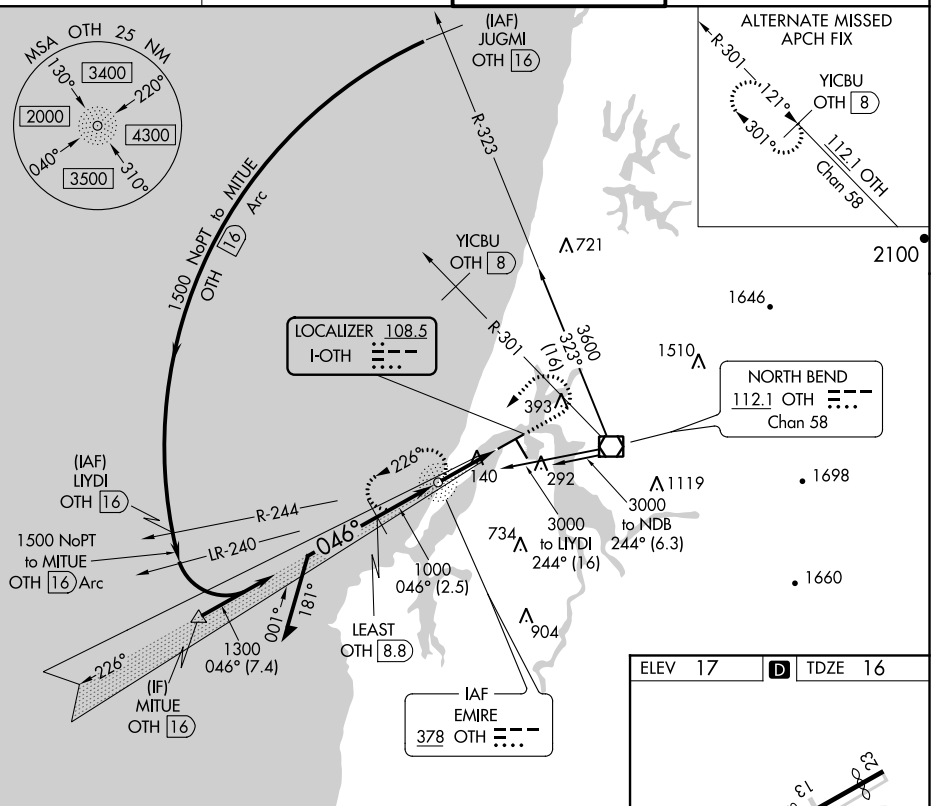


LOC I-OTH <u>108.5</u>	APP CRS 046°	Rwy Idg TDZE Apt Elev	5320 16 17
----------------------------------	------------------------	-----------------------------	---------------------------------------

MALSR

MISSED APPROACH: Climb to 600 then climbing left turn to 2100 direct OTH NDB and hold, continue climb-in-hold to 2100.

GND CON
127.1



SOUTHWEST OREGON RGNL (OTH)
COPTER ILS or LOC RWY 5

NW-1, 31 DEC 2020 to 28 JAN 2021

NW-1, 31 DEC 2020 to 28 JAN 2021