

APP CRS  
342°

Rwy Idg	<b>N/A</b>
TDZE	<b>N/A</b>
Apt Elev	<b>534</b>

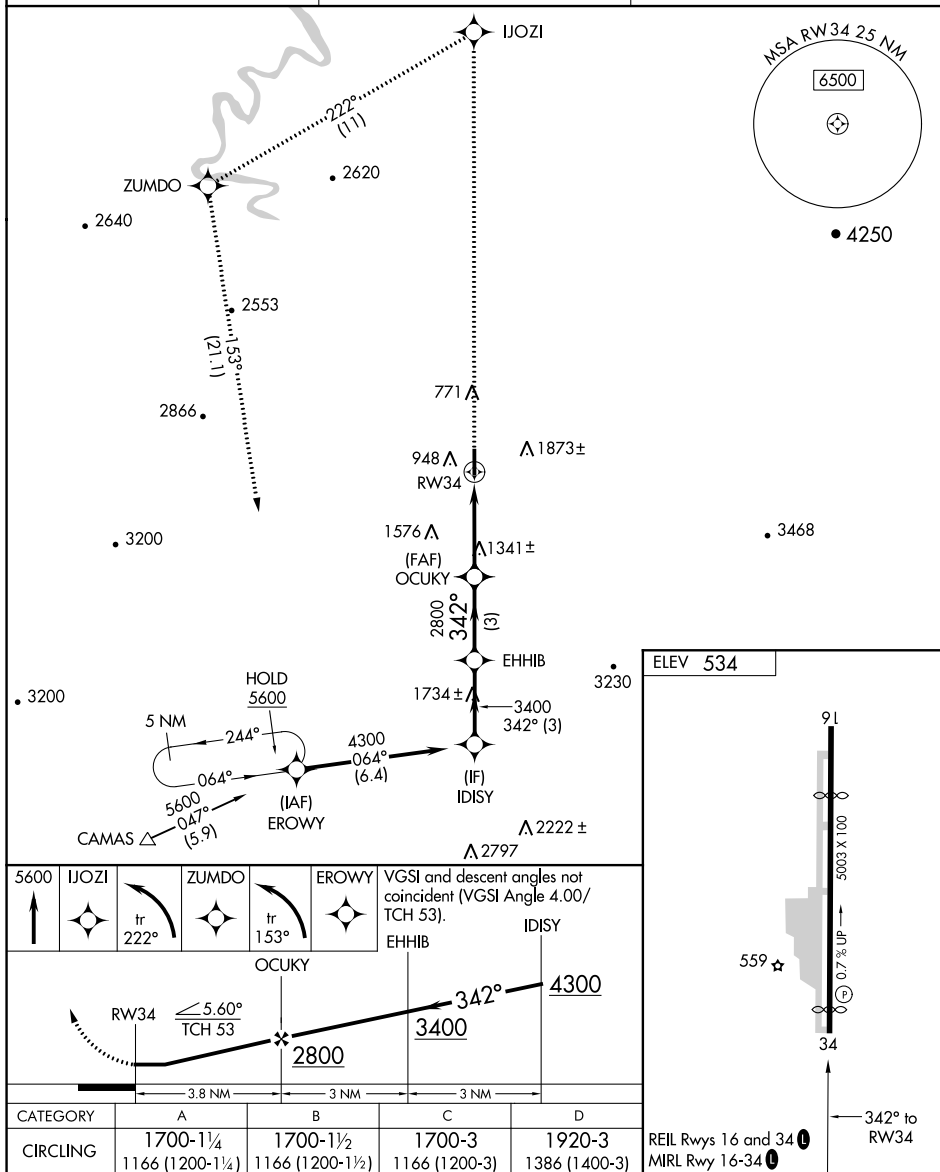
**RNAV (GPS)-B**  
**ROSEBURG RGNL (RBG)**

**T** DME/DME RNP-0.3 NA. Rwy 16, 34 helicopter visibility  
**A** reduction below 1 SM NA. Procedure NA at night.  
Circling NA east of Rwy 16-34.

**MISSED APPROACH:** Climb to 5600 direct IJOZI and left turn on track 222° to ZUMDO and left turn on track 153° to EROWY and hold.

ASOS  
135.475

SEATTLE CENTER  
127.55 239.0

UNICOM  
122.8 (CTAF) 

ROSEBURG, OREGON

Orig-A 30MAR17

43°14'N-123°21'W

ROSEBURG RGNL (RBG)  
RNAV (GPS)-B