




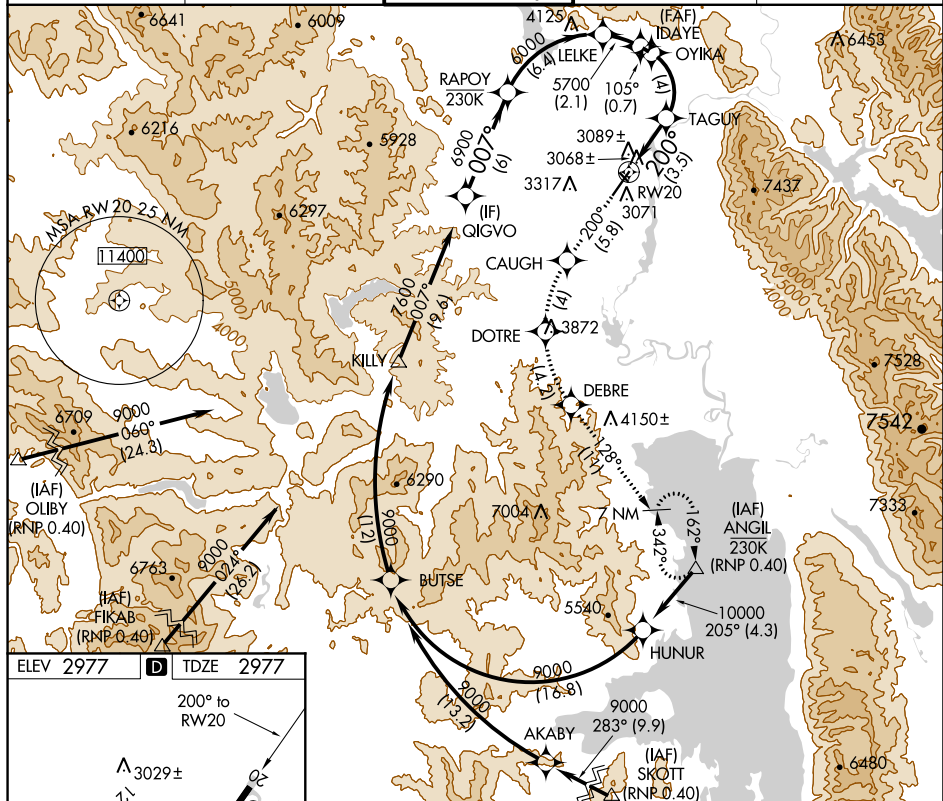
APP CRS	Rwy Idg	9007
200°	TDZE	2977
	Apt Elev	2977

RNAV (RNP) RWY 20
GLACIER PARK INTL (GPI)

   -15°C	RF and GPS required. For uncompensated Baro-VNAV systems, procedure NA below -21°C (-5°F) or above 43°C (109°F). Visibility reduction by helicopters NA. *Missed approach requires minimum climb of 235 feet per NM to 6900.	MISSED APPROACH: Climb to 10000 via 200° track to CAUGH and via left turn to DOTRE, and via left turn to DEBRE, and via 128° track to ANGIL and hold, continue climb-in-hold to 10000.
---	--	--

MISSED APPROACH: Climb to 10000 via 200° track to CAUGH and via left turn to DOTRE, and via left turn to DEBRE, and via 128° track to ANGIL and hold, continue climb-in-hold to 10000.

ATIS 132.625	SALT LAKE CENTER 133.4 285.4	GLACIER TOWER★ 124.55 (CTAF) 0	GND CON 121.6	UNICOM 122.95
------------------------	--	--	-------------------------	-------------------------




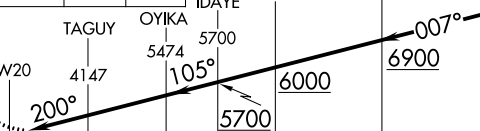
REIL Rwy 20 1100' X 75'

HIRL Rwy 2-20 900' X 150'

TWR 3074

3105 ±

0 100 200

10000 ↑ 200° tr	CAUGH ✦		DOTRE ✦					Procedure Turn NA GP 3.00° TCH 45
CATEGORY	A		B		C		D	
RNP 0.10 DA*			3344-1¼		367 (400-1¼)			
RNP 0.30 DA*			3446-1¾		469 (500-1¾)			
RNP 0.30 DA			3662-2½		685 (700-2½)			
AUTHORIZATION REQUIRED								

AUTHORIZATION REQUIRED