

| | | |
|----------------------------|------------------------|---|
| LOC I-TWFW 108.3 | APP CRS 258° | Rwy Idg 8703 TDZE 4154 Apt Elev 4154 |
|----------------------------|------------------------|---|

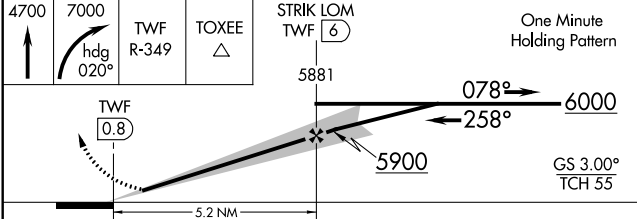
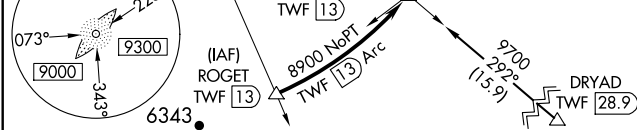
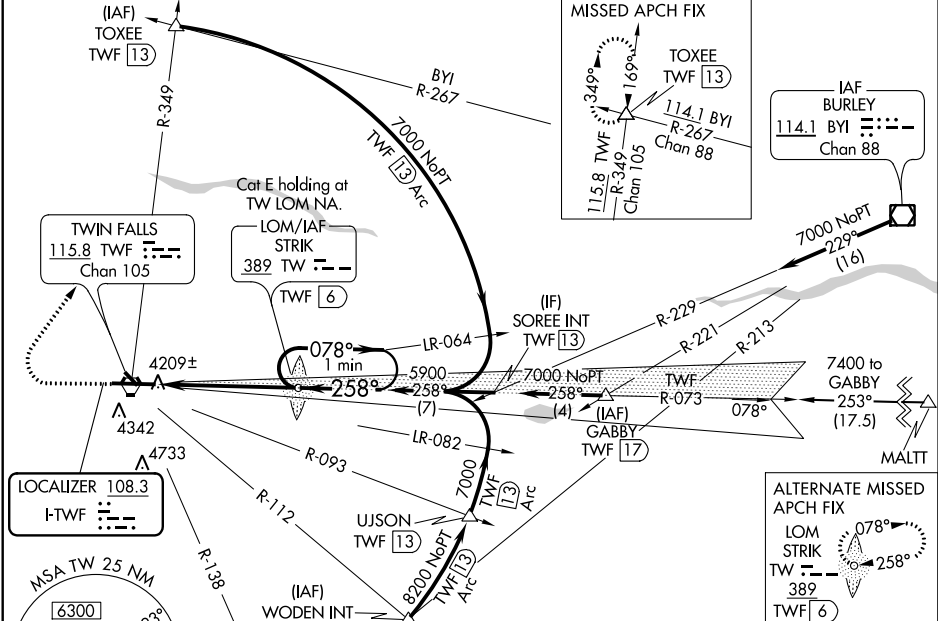
ILS or LOC RWY 26
JOSLIN FIELD-MAGIC VALLEY RGNL (TWF')

Night landing: Rwy 30 NA. When local altimeter setting not received, use Jerome altimeter setting and increase all DA 49 feet, and all MDA 60 feet, increase S-LOC 26 Cat C-E visibility $\frac{1}{8}$ mile. For inoperative MALSRR when using local or Jerome altimeter setting, increase S-ILS 26 Cat E visibility $\frac{1}{4}$ mile and S-LOC 26 Cat E visibility $\frac{1}{2}$ mile. ADF or DME required.

MALSRR

MISSED APPROACH: Climb to 4700 then climbing right turn to 7000 on heading 020° and TWF VORTAC R-349 to TOXEE INT/TWF 13 DME and hold.

| | | | | | |
|------------------------|--|--|-------------------------|---------------------------|-------------------------|
| ASOS 135.025 | TWIN FALLS APP CON★ 126.7 353.75 | TWIN FALLS TOWER★ 118.2 (CTAF) 0 317.5 | GND CON 121.7 | CLNC DEL 123.65 | UNICOM 122.95 |
|------------------------|--|--|-------------------------|---------------------------|-------------------------|



| CATEGORY | A | B | C | D | E |
|----------|-----------------------|-----------------------|---|--------|--------------|
| S-ILS 26 | | 4354- $\frac{1}{2}$ | 200 (200- $\frac{1}{2}$) | | |
| S-LOC 26 | | 4480- $\frac{1}{2}$ | 326 (400- $\frac{1}{2}$) | | |
| CIRCLING | 4700-1 546 (600-1) | 4780-1 626 (700-1) | 5100-2 $\frac{3}{4}$ 946 (1000-2 $\frac{3}{4}$) | 5100-3 | 946 (1000-3) |

ELEV 4154 TDZE 4154

REIL Rwy 8
HIRL Rwy 8-26

FAF to MAP 5.2 NM

| | | | | | |
|---------|------|------|------|------|------|
| Knots | 60 | 90 | 120 | 150 | 180 |
| Min:Sec | 5:12 | 3:28 | 2:36 | 2:05 | 1:44 |

NW-1, 31 DEC 2020 to 28 JAN 2021

NW-1, 31 DEC 2020 to 28 JAN 2021