

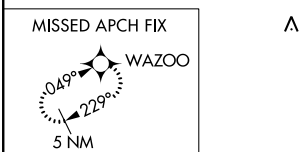
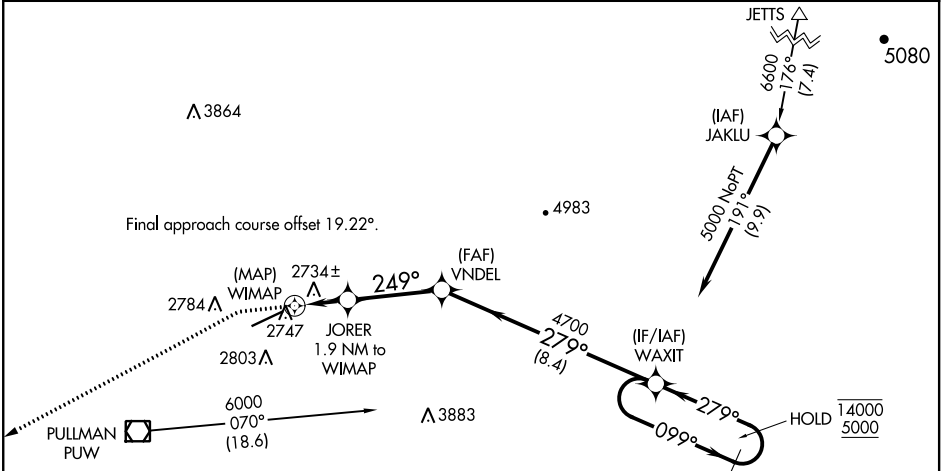


APP CRS	Rwy Idg	7100
249°	TDZE	2552
	Apt Elev	2567

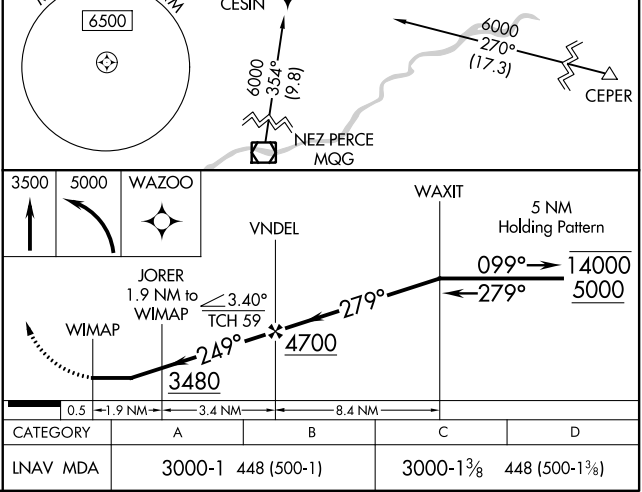
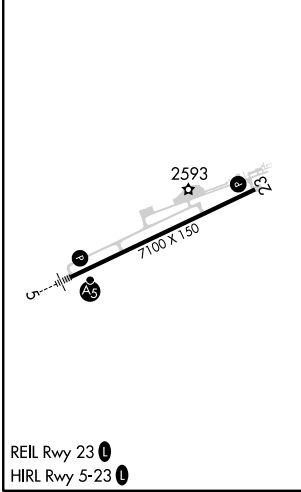
RNAV (GPS) Y RWY 23
PULLMAN/MOSCOW RGNL (PUW)

RNP APCH.		MISSED APPROACH: Climb to 3500 then climbing left turn to 5000 direct WAZOO and hold.
	Procedure NA at night.	
	Rwy 23 helicopter visibility reduction below 1 SM NA.	

ASOS 135.675	SEATTLE CENTER 123.95 290.55	UNICOM 122.8 (CTAF) 0
-----------------	---------------------------------	--------------------------



ELEV 2567	TDZE 2552
-----------	-----------



NW-1, 31 DEC 2020 to 28 JAN 2021

NW-1, 31 DEC 2020 to 28 JAN 2021