
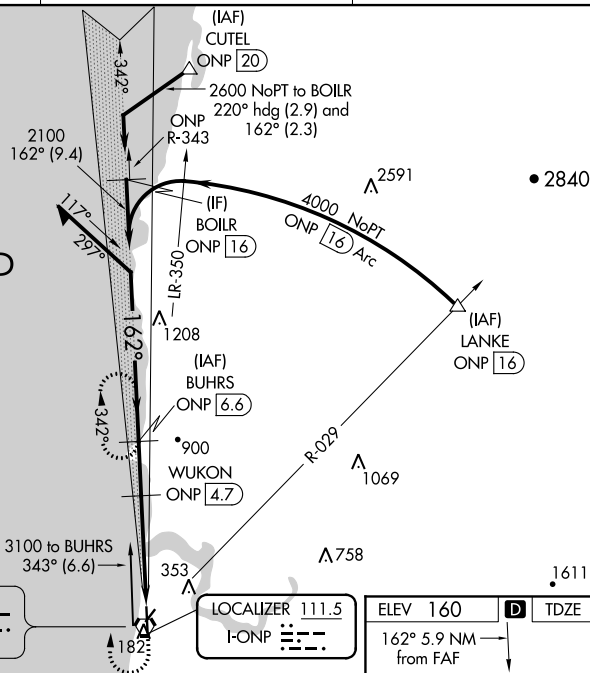


ILS or LOC RWY 16

<p>MALSR</p> 	<p>MISSED APPROACH: Climb to 1000 then climbing right turn to 3000 on heading 020° and on ONP VORTAC R-343 to BUHRS/ONP 6.6 DME and hold, continue climb-in-hold to 3000.</p>
--	---

UNICOM
122.8 (CTAF) **L**

ent
BUH
ONP

Remain
within 10 NM

2600
GS 3.00°
TCH 55

ONP

WU
ONP
480

00
*1

*1 480

KON 4.7

*C
[

ONP
2.1
↓

V
ONP
0.7

*LC
ONP
PORTA

DC onl
AC


y.

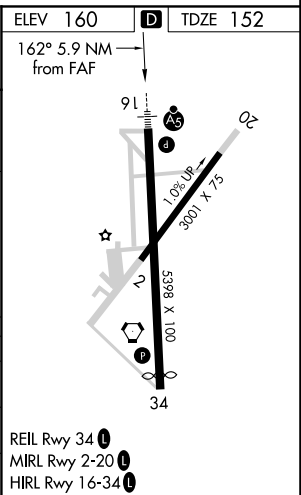
☆

2

5398
1.0% U
300

51 x 75

CATEGORY	A	B	C	D
S-ILS 16	402- ³ / ₄ 250 (300- ³ / ₄)			
S-LOC 16	660- ³ / ₄ 508 (500- ³ / ₄)		660-1 508 (500-1)	
 CIRCLING	880-1 720 (800-1)	1000-1 ¹ / ₄ 840 (900-1 ¹ / ₄)	1400-3 1240 (1300-3)	1600-3 1440 (1500-3)



NW-1, 31 DEC 2020 to 28 JAN 2021