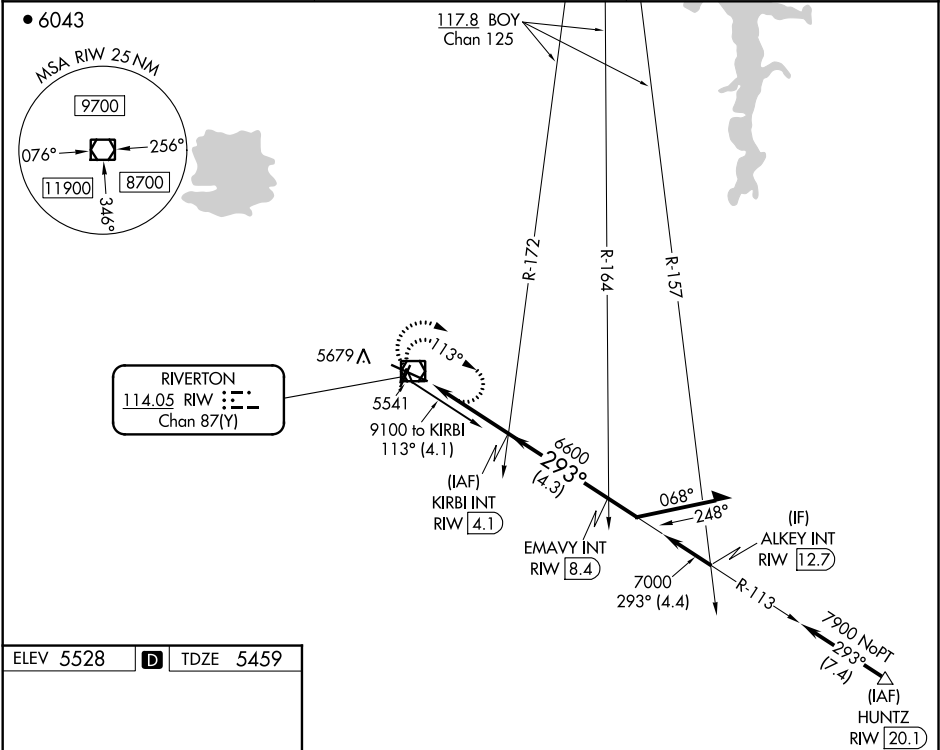


VOR/DME RIW 114.05 Chan 87(Y)	APP CRS 293°	Rwy Idg TDZE Apt Elev	8204 5459 5528
---	------------------------	-----------------------------	---

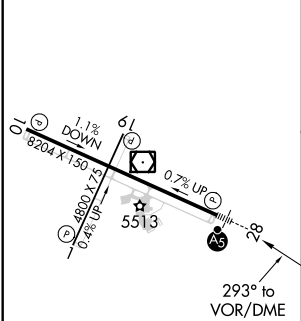
VOR RWY 28
CENTRAL WYOMING RGNL (RIW)

⚠ When local altimeter setting not received, use Lander altimeter setting and increase all MDA 60 feet. VDP NA when using Lander altimeter setting. For inop MALSRL, increase S-28 Cat C and D visibility to 1½ miles.	MALSRL 	MISSED APPROACH: Climb to 7700 in RIW VOR/DME holding pattern.
---	------------	--



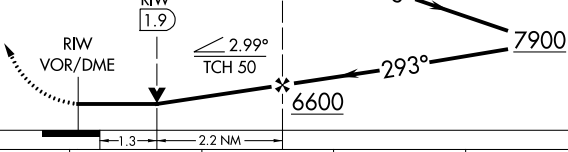

ASOS 121.425	SALT LAKE CENTER 133.25 285.6	UNICOM 122.8 (CTAF) 0
------------------------	---	---------------------------------



ELEV 5528	D	TDZE 5459
-----------	----------	-----------



- REIL Rwy 1, 10 and 19
- MIRL Rwy 1-19
- HIRL Rwy 10-28

7700	RIW	KIRBI INT RIW 4.1	Remain within 10 NM	
				
				
CATEGORY	A	B	C	D
S-28	5920-½	461 (500-½)	5920-1	461 (500-1)
 CIRCLING	6000-1	472 (500-1)	6000-1½ 472 (500-1½)	6120-2 592 (600-2)