

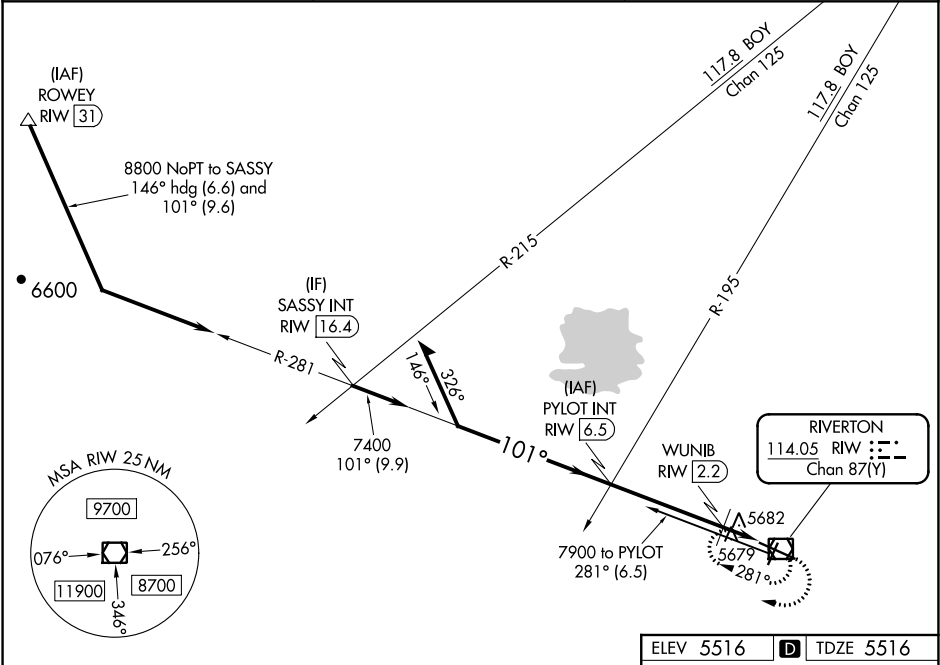
VOR/DME RIW <b>114.05</b> Chan <b>87(Y)</b>	APP CRS <b>101°</b>	Rwy Idg <b>8204</b> TDZE <b>5516</b> Apt Elev <b>5516</b>
---	------------------------	---

VOR RWY 10  
CENTRAL WYOMING RGNL (RIW)

**⚠** When local altimeter setting not received, use Lander altimeter setting and increase all MDA 60 feet and increase S-10 Cat C and D visibility ¼ mile and Circling Cat C and D visibility ½ mile, increase WUNIB fix minimums Cat C and D visibility ½ mile.  
Rwy 10 helicopter visibility reduction below ¾ SM NA.

MISSED APPROACH: Climb to 7900 in RIW VOR/DME holding pattern.

ASOS <b>121.425</b>	SALT LAKE CENTER <b>133.25 285.6</b>	UNICOM <b>122.8 (CTAF) 0</b>
------------------------	---	---------------------------------



ELEV 5516 **D** TDZE 5516

7900 RIW

101° to VOR/DME

1.1% DOWN 61  
8204 X 1.50  
0.4% UP 5513  
0.7% UP 28

Remain within 10 NM

PYLOT INT RIW 6.5

7800

101°

7400

3.00° TCH 50

WUNIB RIW 2.2

RIW VOR/DME

\*6000

4.3 NM 1.4 NM

\*6060 when using Lander altimeter setting.

CATEGORY	A	B	C	D
S-10	6000-1	484 (500-1)	6000-1 ¾	484 (500-1 ¾)
<b>C</b> CIRCLING	6000-1	484 (500-1)	6000-1 ½	6120-2 484 (500-1 ½) 604 (600-2)
WUNIB FIX MINIMUMS (DME REQUIRED)				
S-10	5940-1	424 (500-1)	5940-1 ¼	424 (500-1 ¼)
<b>C</b> CIRCLING	6000-1	484 (500-1)	6000-1 ½	6120-2 484 (500-1 ½) 604 (700-2)

REIL Rwy 1, 10, and 19 **0**

MIRL Rwy 1-19 **0**

HRL Rwy 10-28 **0**

NW-1, 31 DEC 2020 to 28 JAN 2021

NW-1, 31 DEC 2020 to 28 JAN 2021