

LOC I-RIW 110.5	APP CRS 284°	Rwy Idg TDZE Apt Elev	8204 5459 5528
---------------------------	------------------------	-----------------------------	---

ILS or LOC RWY 28
CENTRAL WYOMING RGNL (RIW)

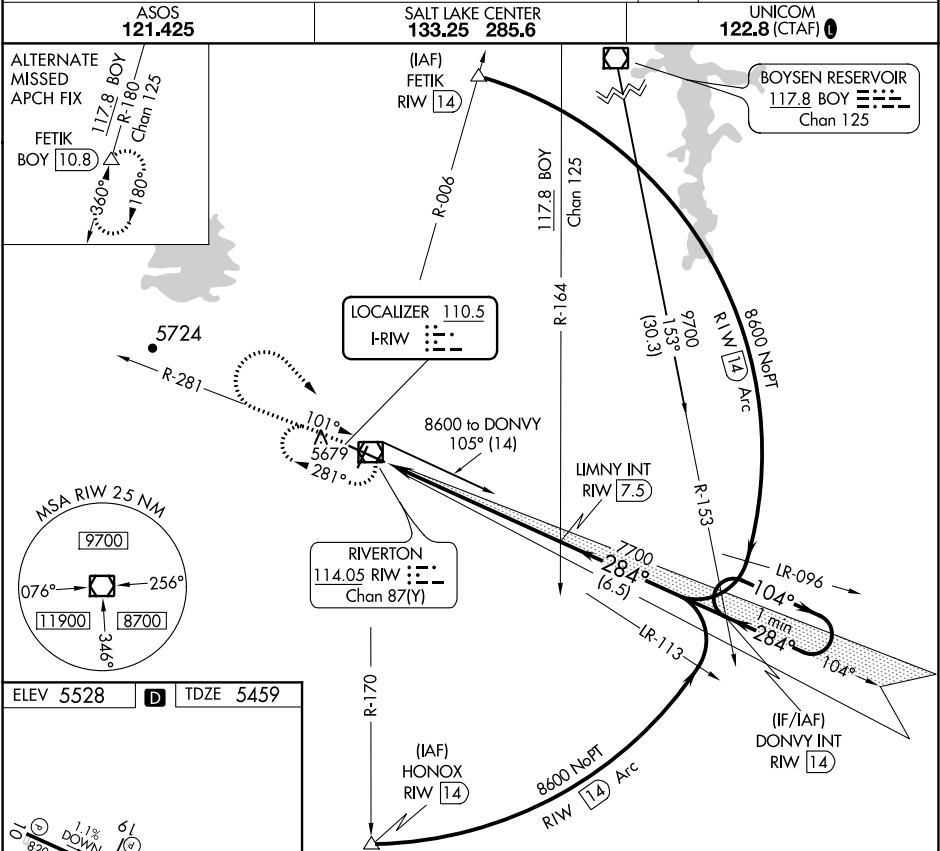
NA

When local altimeter setting not received, use Lander altimeter setting: increase DA to 5713 feet; increase all MDA 60 feet and S-LOC 28 Cat C and D visibility ¼ mile. For inop MALSRL, when using Lander altimeter setting, increase S-ILS 28 all Cats visibility to ¾ mile and S-LOC 28 Cat C and D visibility to 1¾ mile. VDP NA when using Lander altimeter setting.

MALSRL

AS

MISSED APPROACH: Climb to 6800 then climbing right turn to 7700 direct RIW VOR/DME and hold, continue climb-in-hold to 7700.



6800 7700 RIW		LIMNY INT RIW 7.5		DONVY INT RIW 14		One Minute Holding Pattern	
*LOC only		*RIW 1.8		7700		104° 284° 8600	
RIW 0.6		7700		7700		GS 3.00° TCH 50	
1.2		5.7 NM		6.5 NM			
CATEGORY		A		B		C	
S-ILS 28		5659-½		200 (200-½)			
S-LOC 28		5880-½ 421 (400-½)		5880-¾ 421 (400-¾)			
CIRCLING		6000-1 472 (500-1)		6000-1½ 472 (500-1½)		6120-2 592 (600-2)	