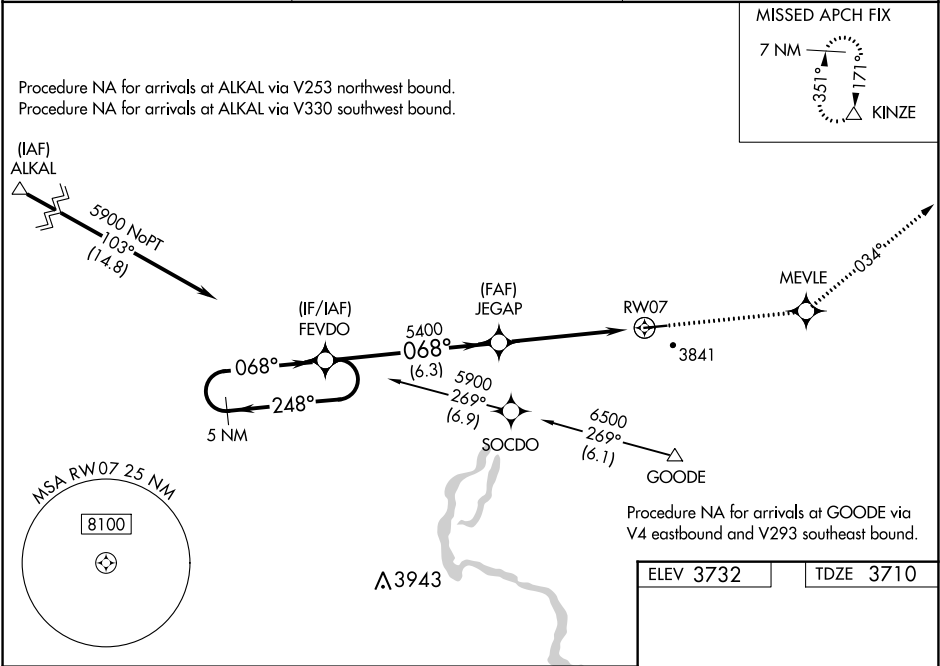


WAAS CH 53709 W07A	APP CRS 068°	Rwy Idg TDZE Apt Elev	4745 3710 3732
--	------------------------	-----------------------------	---

RNAV (GPS) RWY 7
GOODING MUNI (GNG)

RNP APCH. ▼ Rwy 7 helicopter visibility reduction below ¾ SM NA. Baro-VNAV NA when using Jerome County altimeter setting. For uncompensated Baro-VNAV systems, LNAV/VNAV NA below -22°C or above 41°C. Obtain local altimeter setting on CTAF; when not received, use Jerome County altimeter setting and increase all DA 86 feet and all MDA 100 feet. Increase LPV visibility ¼ SM all Cats, LNAV/VNAV visibility ½ SM all Cats, LNAV visibility Cat C and D ½ SM.	MISSED APPROACH: Climb to 7200 direct MEVLE and left turn via 034° track to KINZE and hold.
---	---

AWOS-3PT 124.175	SALT LAKE CENTER 118.05 363.0	UNICOM 122.8 (CTAF) 0*
----------------------------	---	----------------------------------



5 NM Holding Pattern		FEVDO	7200 ↑	MEVLE ✦	034° tr ↷	KINZE △
5900 ← 248° 068° →		JEGAP	068° to RW07			
GP 3.00° TCH 40		5400	RW07	1.4% UP → 4745 X 75		
		6.3 NM	5.2 NM	25		
CATEGORY	A	B	C	D	△ 3779± △ 3819±	
LPV DA	3960-1 250 (300-1)					
LNAV/VNAV DA	4049-1¼ 339 (400-1¼)					
LNAV MDA	4120-1 410 (400-1)		4120-1¼ 410 (400-1¼)		MIRL Rwy 7-25 0*	

NW-1, 31 DEC 2020 to 28 JAN 2021

NW-1, 31 DEC 2020 to 28 JAN 2021