

APP CRS	Rwy Idg	5500
356°	TDZE	208
	Apt Elev	208

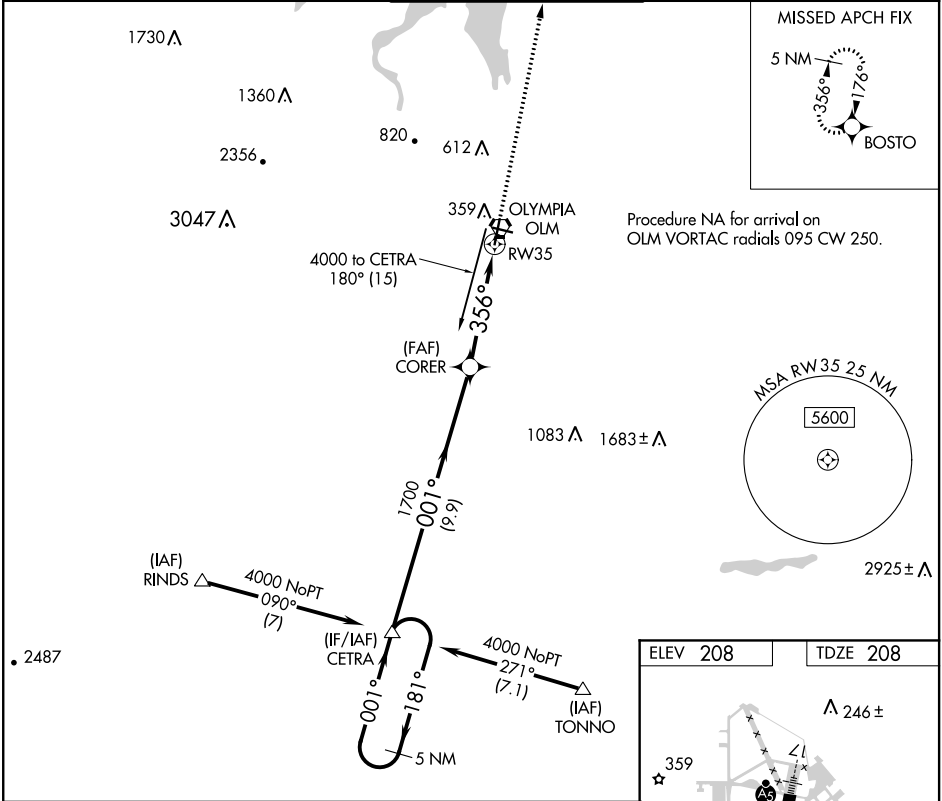
RNAV (GPS) RWY 35

OLYMPIA RGNL (OLM)

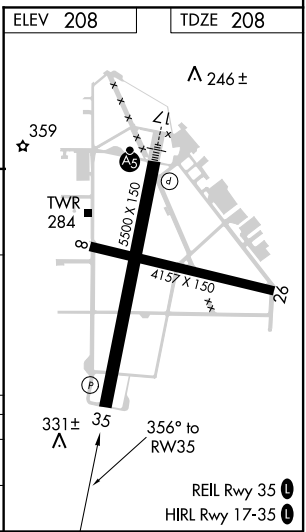
Rwy 35 helicopter visibility reduction below ¾ SM NA.
DME/DME RNP-0.3 NA.

MISSED APPROACH: Climb to 4000 direct BOSTO and hold, continue climb-in-hold to 4000.

ATIS ★ 135.725	SEATTLE APP CON 121.1 290.9	OLYMPIA TOWER ★ 124.4 (CTAF) 254.25	GND CON 121.6	UNICOM 122.95
-------------------	--------------------------------	--	------------------	------------------



<div>5 NM Holding Pattern</div> <div>4000 ← 181° 001° →</div> <div>5 NM</div> <div>4000 NoPT 090° (7)</div> <div>4000 NoPT 271° (7.1)</div> <div>5 NM</div> <div>181°</div> <div>001°</div> <div>1700</div> <div>356°</div> <div>1.8 NM to RW35</div> <div>3.04° TCH 50</div> <div>1.8 NM</div> <div>2.7 NM</div> <div>9.9 NM</div> <div>4000</div> <div>BOSTO</div>				
CATEGORY	A	B	C	D
LNAV MDA	840-1	632 (700-1)	840-1¾	632 (700-1¾)
CIRCLING	840-1 632 (700-1)	860-1 652 (700-1)	1020-2½ 812 (900-2½)	1020-2¾ 812 (900-2¾)



NW-1, 31 DEC 2020 to 28 JAN 2021

NW-1, 31 DEC 2020 to 28 JAN 2021