

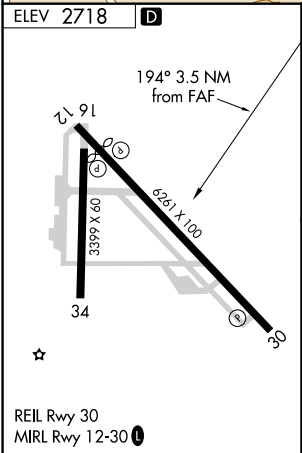
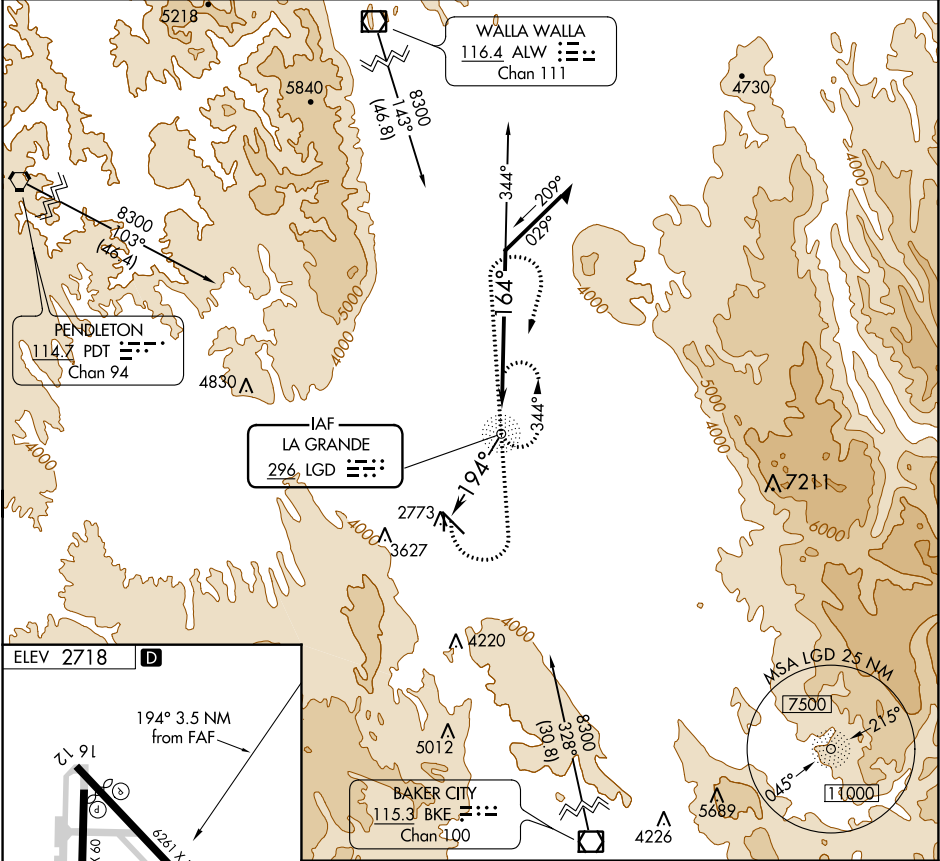
NDB LGD 296	APP CRS 194°	Rwy Idg TDZE Apt Elev N/A N/A 2718
-----------------------	------------------------	--


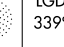

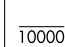
NDB-B

LA GRANDE/UNION COUNTY (LGD)

<p>NA</p> <p>-16°C</p>	<p>Circling NA for Cat C southwest of Rwy 12-30.</p>	<p>MISSED APPROACH: Climbing left turn to 6000 direct LGD NDB and on 339° bearing from LGD NDB, then climbing right turn to 7700 direct LGD NDB and hold.</p>
--------------------------------------	--	---

AWOS-3PT 135.075	SEATTLE CENTER 132.6 269.35	UNICOM 122.8 (CTAF)
----------------------------	---------------------------------------	-------------------------------



<div><div>6000</div><div>LGD</div><div></div></div> <div><div>LGD</div><div>339°</div><div></div></div> <div><div>7700</div><div>LGD</div><div></div></div> <div><div>LGD</div><div>NDB</div><div></div></div>					Remain within 10 NM				
<div><div>10000</div><div>344°</div><div>7700</div><div>164°</div><div>6000</div><div>194°</div><div>3.5 NM</div></div>									
CATEGORY									
A		B		C		D			
4860-1¼		4860-1½		4860-3		NA			
2142 (2200-1¼)		2142 (2200-1½)		2142 (2200-3)					
C CIRCLING									

NDB-B

NW-1, 31 DEC 2020 to 28 JAN 2021

NW-1, 31 DEC 2020 to 28 JAN 2021