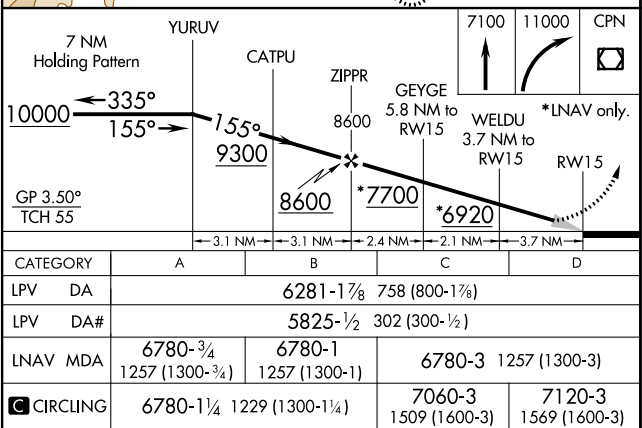


RNAV (GPS) RWY 15
BERT MOONEY (BTM)

MISSED APPROACH: (Do not exceed 190K until 7100)
Climb to 7100 then climbing right turn to 11000 direct
CPN VOR/DME and hold, continue climb-in-hold to 11000.
#Missed approach requires minimum climb of 365 feet
per NM to 8700

UNICOM
123.0 (CTAF) 

RNAV (GPS) RWY 15