

WAAS CH <b>45810</b> <b>W34A</b>	APP CRS <b>344°</b>	Rwy Idg TDZE <b>8500</b> <b>379</b> Apt Elev <b>433</b>
--	------------------------	--

RNAV (GPS) Y RWY 34L

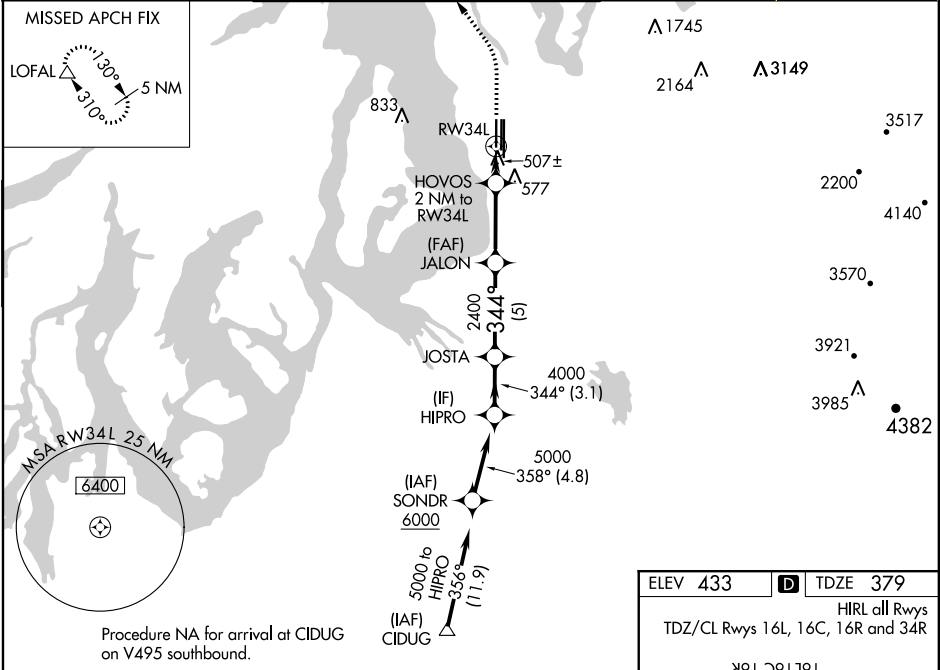
SEATTLE-TACOMA INTL (SEA)

**▼** DME/DME RNP -0.3 NA. For uncompensated Baro-VNAV systems, LNAV/VNAV NA below -6°C (22°F) or above 54°C (130°F). Use of FD or AP providing RNAV track guidance required during simultaneous operations. LNAV procedure NA during simultaneous operations. Simultaneous approach authorized with Rwy 34R/C. For inoperative ALS, increase LNAV/VNAV all Cats visibility to 1 3/8 SM, increase LNAV Cat A and B visibility to RVR 5500 and Cat C and D visibility to 1 3/8 SM. #RVR 1800 authorized with use of FD or AP or HUD to DA.

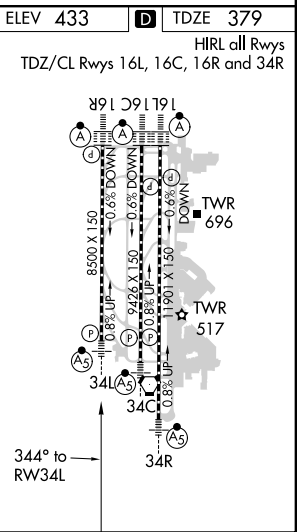
MALSR

MISSED APPROACH: Climb to 900 then climbing left turn to 5000 direct LOFAL and hold.

D-ATIS <b>118.0</b>	SEATTLE APP CON <b>133.65 273.45</b>	SEATTLE TOWER <b>119.9 239.3</b> (Rwys 16L, 16C, 34C, 34R) <b>120.95 239.3</b> (Rwys 16R, 34L)	GND CON <b>121.7</b>	CLNC DEL <b>128.0</b>	CPDLC
------------------------	---	--	-------------------------	--------------------------	-------



HIPRO		VGSi and RNAV glidepath not coincident (VGSi Angle 3.00/TCH 75).		900	5000	LOFAL
JOSTA		JALON		*LNAV only		
5000		2400		*1.4 NM to RWY34L		
GP 3.00°		2400		*1040		
TCH 55		2400		RWY34L		
3.1 NM		5 NM		0.6		
CATEGORY		A		B		
LPV DA#		579/24		200 (200-1/2)		
LNAV/VNAV DA		808/40		429 (400-3/4)		
LNAV MDA		860/24		481 (500-1/2)		
CIRCLING		1000-1		567 (600-1)		
		1000-1 1/2		567 (600-1 1/2)		
		1000-2		567 (600-2)		



NW-1, 31 DEC 2020 to 28 JAN 2021

NW-1, 31 DEC 2020 to 28 JAN 2021