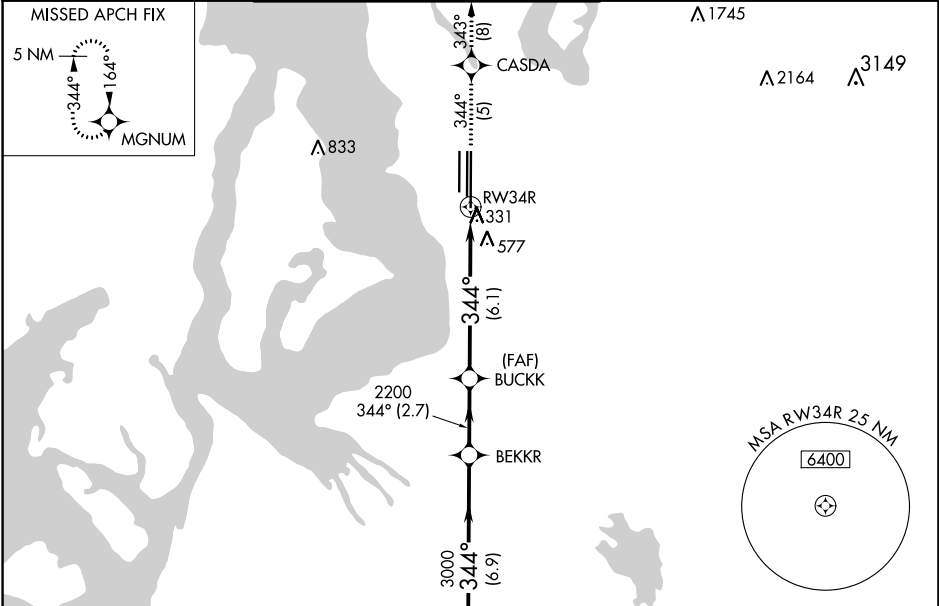


APP CRS	Rwy Idg	11901
344°	TDZE	372
	Apf Elev	432

RNAV (RNP) Z RWY 34R
SEATTLE-TACOMA INTL (SEA)

RNP AR APCH.	MALSR	MISSED APPROACH: Climb to 5000 on track 344° to CASDA and on track 343° to MGNUM and hold, continue climb-in-hold to 5000.
Simultaneous approach authorized. For uncompensated Baro-VNAV systems, procedure NA below -6°C or above 54°C. Use of FD or AP required during simultaneous operations. For inop ALS, increase RNP 0.28 all Cats visibility to 1½ SM. Inop table does not apply to RNP 0.30.		

D-ATIS	SEATTLE APP CON	SEATTLE TOWER	GND CON	CLNC DEL	CPDLC
118.0	133.65 273.45	119.9 239.3 (Rwys 16L, 16C, 34C, 34R) 120.95 239.3 (Rwys 16R, 34L)	121.7	128.0	



MISSED APCH FIX		5 NM		344°		164°		MGNUM	
VGSI and RNAV glidepath not coincident (VGSI Angle 2.75/TCH 81).		NEEAL		BEKKR		BUCKK		RWY 34R	
5000		3000		2200		1200		600	
GP 2.75°		TCH 60		6.9 NM		2.7 NM		6.1 NM	
CATEGORY	A	B	C	D					
RNP 0.28 DA	867/50					495 (500-1)			
RNP 0.30 DA	880-1½					508 (500-1½)			
AUTHORIZATION REQUIRED									

NW-1, 31 DEC 2020 to 28 JAN 2021

NW-1, 31 DEC 2020 to 28 JAN 2021