

APP CRS	Rwy Idg	<b>9426</b>
<b>164°</b>	TDZE	<b>430</b>
	Apt Elev	<b>433</b>

RNAV (RNP) Z RWY 16C  
SEATTLE-TACOMA INTL (SEA)

**T** For uncompensated Baro-VNAV systems, procedure NA below -6°C (22°F) or above 54°C (130°F). GPS required. See additional requirements on adjacent information page. For inop ALS, increase RNP 0.12 all Cats visibility to RVR 5200, and increase RNP 0.30 all Cats visibility to 1½ SM.

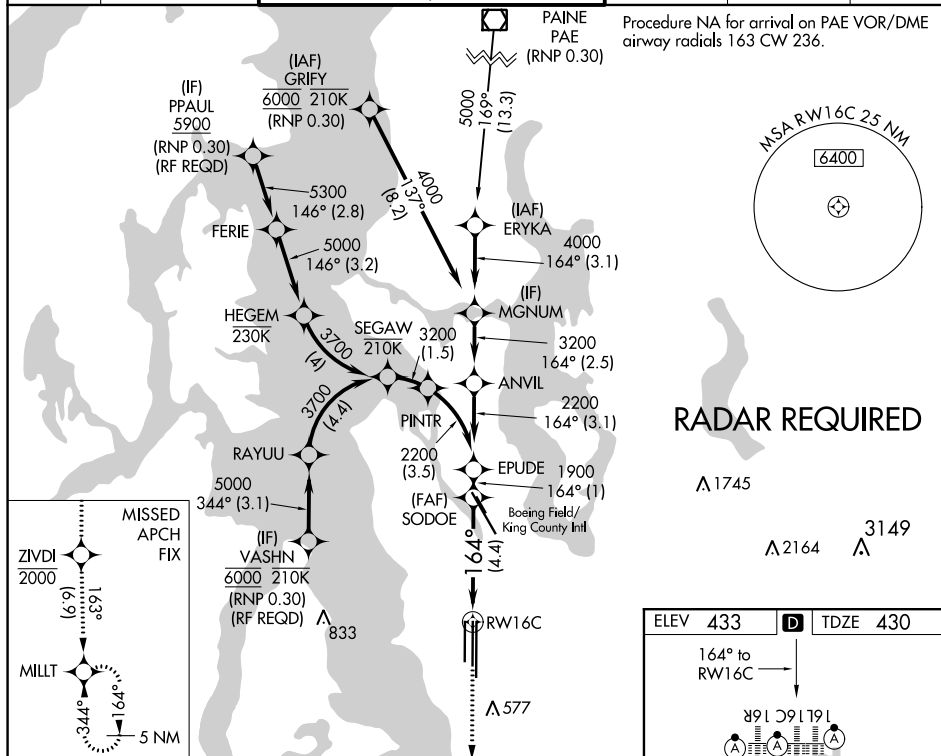
ALSF-2



**MISSED APPROACH:** Climb direct ZIVDI to cross ZIVDI at or below 2000, then climb to 5000 on track 163° to MILLT and hold, continue climb-in-hold to 5000.

D-ATIS <b>118.0</b>	SEATTLE APP CON <b>133.65 273.45</b>	SEATTLE TOWER <b>119.9 239.3</b> (Rwys 16L, 16C, 34C, 34R) <b>120.95 239.3</b> (Rwys 16R, 34L)	GND CON <b>121.7</b>	CLNC DEL <b>128.0</b>	CPDLC
------------------------	---	--	-------------------------	--------------------------	-------





Procedure NA for arrival on PAE VOR/DME  
airway radials 163 CW 236.



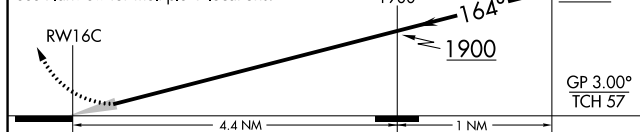
## RADAR REQUIRED

A 1745

3149

	ZIVDI  2000	5000  tr 163°	MILLT 	VGSI and RNAV glidepath not coincident (VGSI Angle 3.00/TCH 71). SODOE	EPUDE
---	--	--	--	--	-------

See Planview for multiple IF locations.



CATEGORY	A	B	C	D
RNP 0.12 DA		758/29	328 (400-5%)	
RNP 0.30 DA		834/43	404 (500-7%)	

AUTHORIZATION REQUIRED

[illegible]

HIRL all Rwys  
TDZ/CL Rwys 16L, 16C, 16R and 34R