

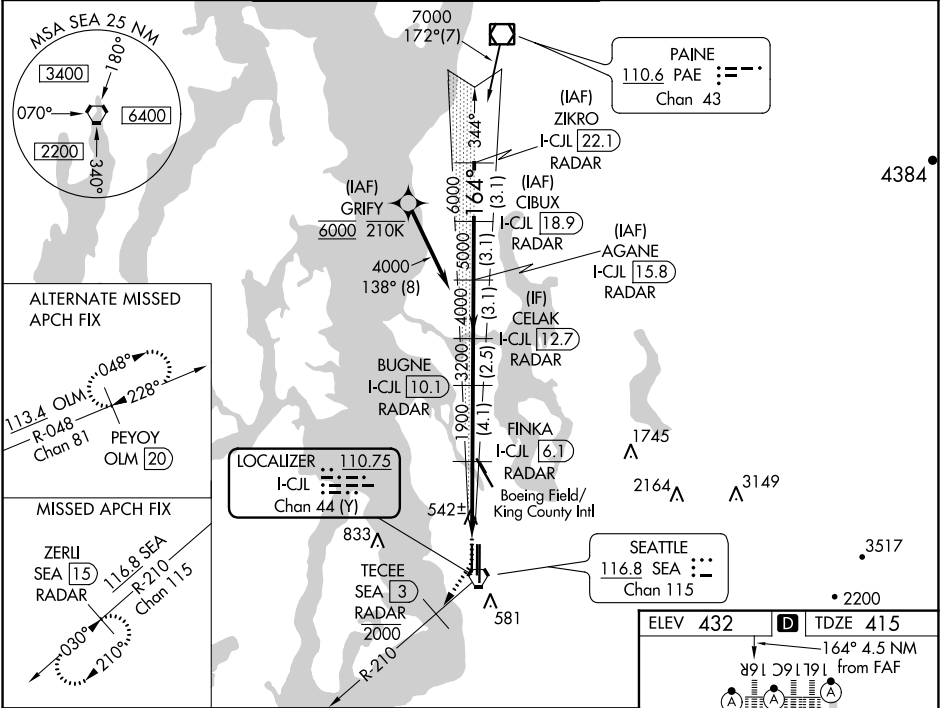
LOC/DME I-CJL 110.75 Chan 44 (Y)	APP CRS 164°	Rwy Idg TDZE Apt Elev	8500 415 432
--	------------------------	-----------------------------	---

ILS or LOC RWY 16R

SEATTLE-TACOMA INTL (SEA)

DME or RADAR required. From GRIFY:RNAV 1-GPS required.	ALSF-2	MISSED APPROACH: Climb to 900 then climb on heading 195° and on SEA VORTAC R-210 to cross TECEE/SEA 3 DME/RADAR at or below 2000 then climb to 5000 on SEA VORTAC R-210 to ZERLI/SEA 15 DME/RADAR and hold, continue climb-in-hold to 5000.
--	--------	---

D-ATIS 118.0	SEATTLE APP CON 133.65 273.45	SEATTLE TOWER 119.9 239.3 (Rwys 16L, 16C, 34C, 34R) 120.95 239.3 (Rwys 16R, 34L)	GND CON 121.7	CLNC DEL 128.0	CPDLC
------------------------	---	--	-------------------------	--------------------------	-------



NW-1, 31 DEC 2020 to 28 JAN 2021

NW-1, 31 DEC 2020 to 28 JAN 2021

900	hdg 195°	TECEE SEA 3 RADAR 2000	5000	ZERLI SEA 15	VGSI and ILS glidepath not coincident (VGSI Angle 3.00/TCH 69).	ZIKRO	CIBUX	I-CJL 22.1 RADAR	AGANE	I-CJL 15.8 RADAR	CELAK	I-CJL 12.7 RADAR	FINKA	I-CJL 6.1 RADAR	BUGNE	I-CJL 10.1 RADAR	I-CJL 1.6	I-CJL 2.6	1900	3200	4000	5000	6000	GS 3.00°	TCH 55	1 NM	3.5 NM	4.1 NM	2.5 NM	3.1 NM	3.1 NM	3.1 NM
CATEGORY	A	B	C	D																												
S-ILS 16R					615/18	200 (200-½)																										
S-LOC 16R					800/24	385 (400-½)																										
CIRCLING					1000-1	568 (600-1)																										

