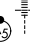
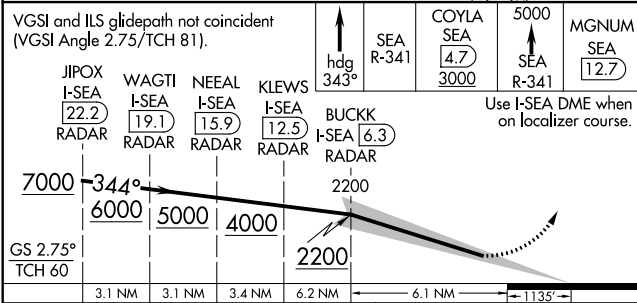
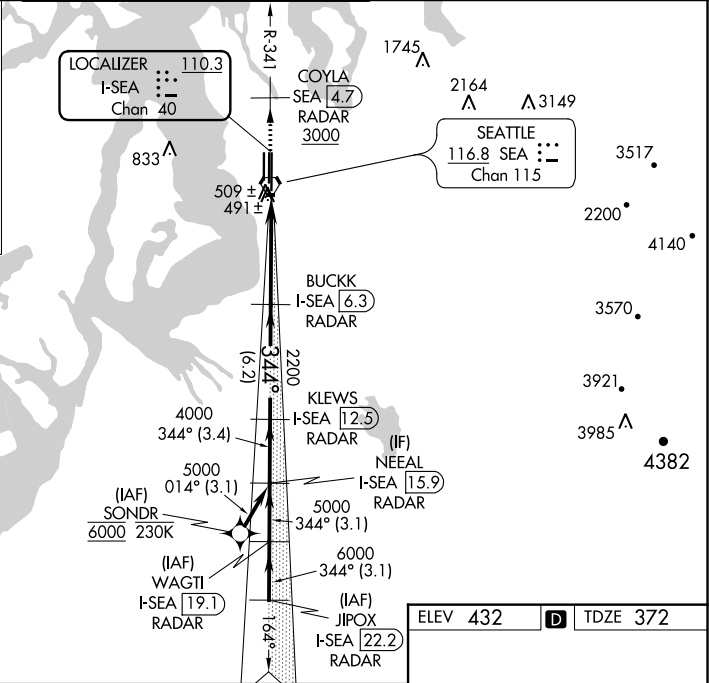
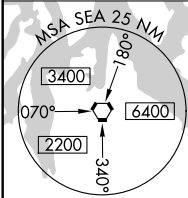
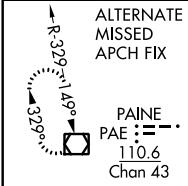
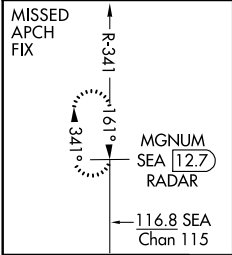


LOC/DME I-SEA <b>110.3</b> Chan <b>40</b>	APP CRS <b>344°</b>	Rwy Idg TDZE Apt Elev <b>432</b>	<b>11901</b> <b>372</b> <b>432</b>
---	------------------------	--	--

ILS RWY 34R (SA CAT I & II)  
SEATTLE-TACOMA INTL (SEA)

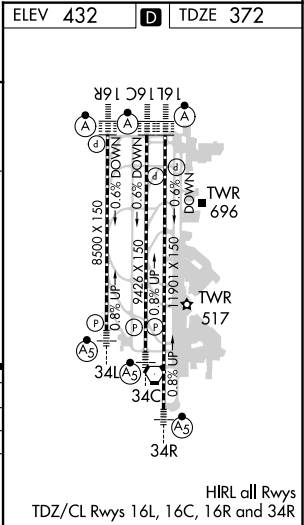
From SONDR: RNAV 1-GPS required. DME or RADAR required.	MALSR 	MISSED APPROACH: Climb on heading 343° and outbound on SEA VORTAC R-341 to cross COYLA/SEA 4.7 DME/RADAR at or above 3000 then climb to 5000 on SEA VORTAC R-341 to MGNUM/SEA 12.7 DME/RADAR and hold, continue climb-in-hold to 5000.
---	--	--

D-ATIS <b>118.0</b>	SEATTLE APP CON <b>133.65 273.45</b>	SEATTLE TOWER <b>119.9 239.3</b> (Rwys 16L, 16C, 34C, 34R) <b>120.95 239.3</b> (Rwys 16R, 34L)	GND CON <b>121.7</b>	CLNC DEL <b>128.0</b>	CPDLC
------------------------	---	--	-------------------------	--------------------------	-------



CATEGORY	A	B	C	D
S-ILS 34R	SA CAT I	RA 250/14	150	DA 522
S-ILS 34R	SA CAT II	RA 200/12	100	DA 472

**SA CATEGORY I & II ILS - SPECIAL AIRCREW & AIRCRAFT CERTIFICATION REQUIRED**



NW-1, 31 DEC 2020 to 28 JAN 2021

NW-1, 31 DEC 2020 to 28 JAN 2021