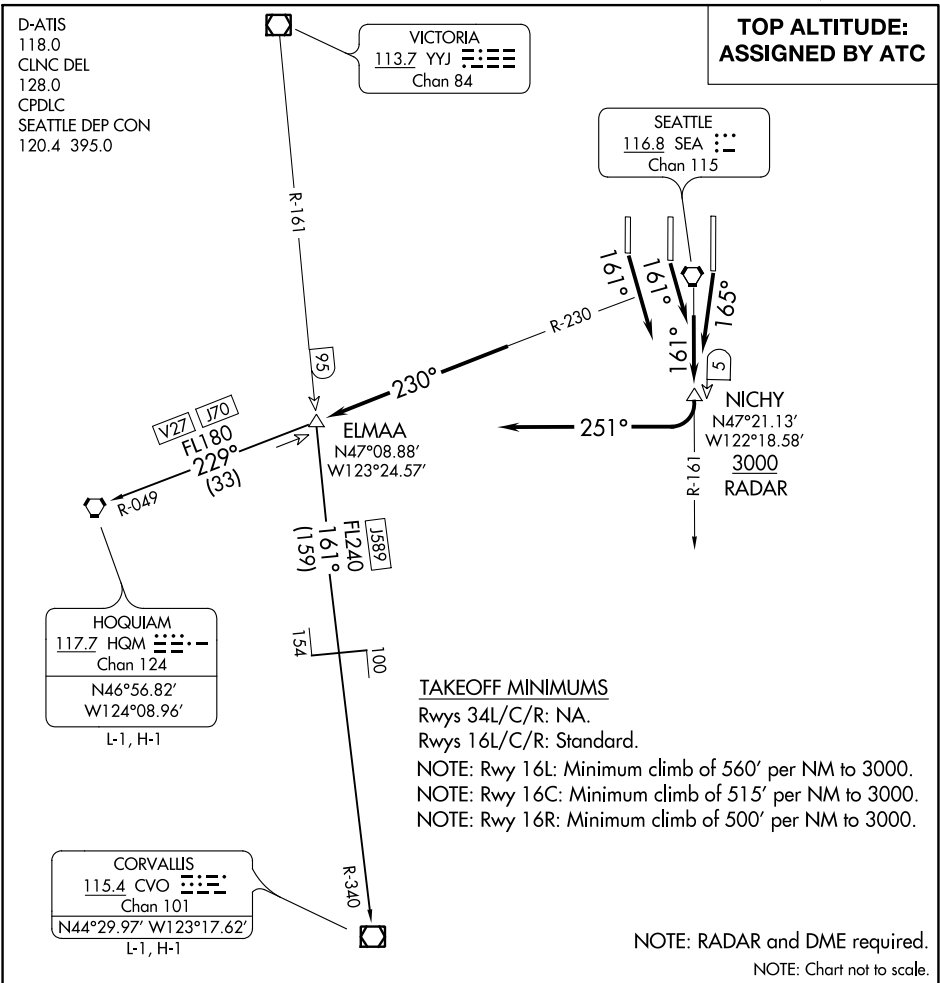


ELMAA THREE DEPARTURE

AL-582 (FAA)

SEATTLE-TACOMA INTL (SEA)
SEATTLE, WASHINGTON



DEPARTURE ROUTE DESCRIPTION

TAKEOFF RUNWAY 16L: Climb heading 165° and SEA R-161, thence. . .

TAKEOFF RUNWAYS 16C, 16R: Climb heading 161° and SEA R-161, thence. . .

. . . to cross NICHY/5 DME/RADAR at or above 3000, then right turn heading 251° to intercept SEA R-230 to ELMAA INT, then on (transition/assigned route), expect requested altitude/flight level 15 NM from SEA.

CORVALLIS TRANSITION (ELMAA3.CVO): From over ELMAA on YYJ R-161 and CVO R-340 to CVO VOR/DME.

HOQUIAM TRANSITION (ELMAA3.HQM): From over ELMAA on HQM R-049 to HQM VORTAC.

ELMAA THREE DEPARTURE

NW-1, 31 DEC 2020 to 28 JAN 2021

NW-1, 31 DEC 2020 to 28 JAN 2021