

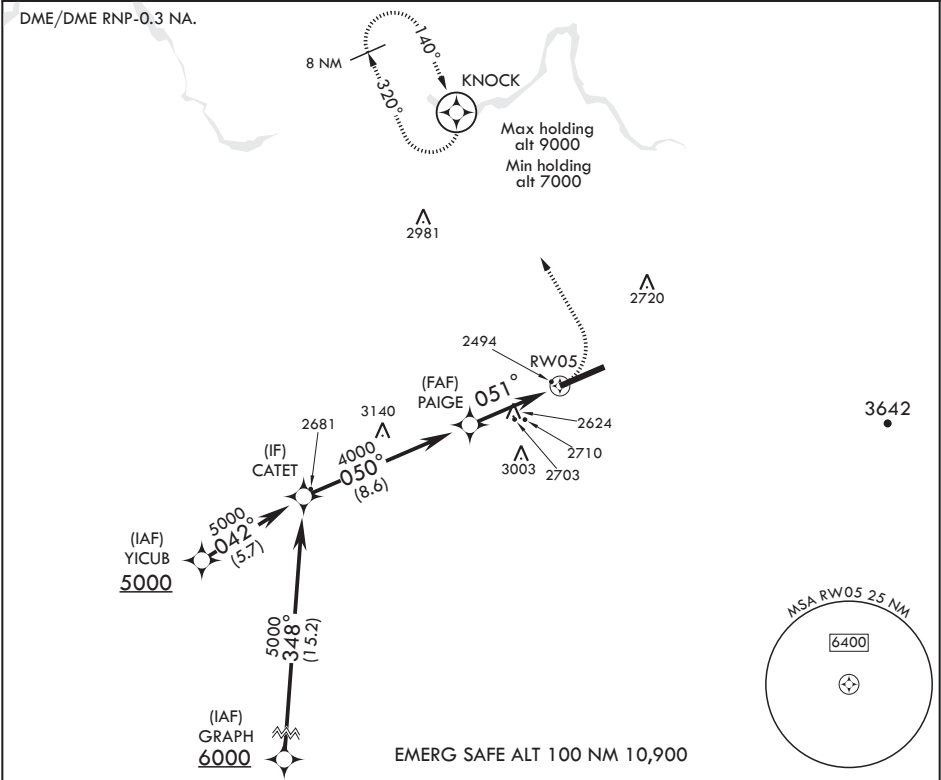
APCH CRS	Rwy Idg	13,899
051°	TDZE	2462
	Arpt Elev	2462

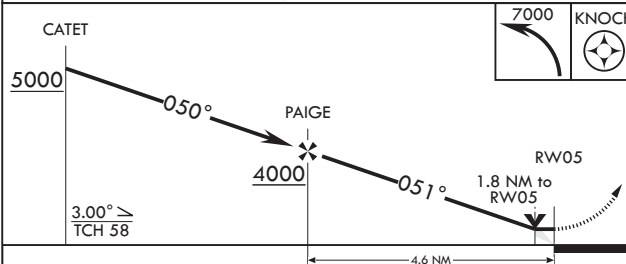
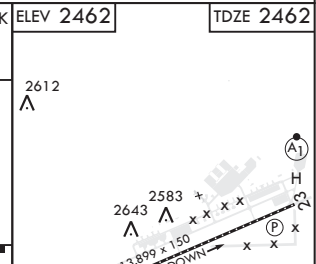
AL-553 (USAF)

FAIRCHILD AFB (KSKA)

<p>▼ * When ALS inop, increase CAT A RVR to 55, vis to 1 mile, CAT B RVR to 60, vis to 1 1/4 miles, and CAT CDE vis to 2 1/2 miles. ** Circling not authorized S of Rwy 5-23.</p>	<p>ALSF-2</p> 	<p>MISSED APPROACH: Climb to 7000 via left turn direct KNOCK and hold, continue climb in hold to 7000.</p>
---	---	--

<p>ATIS</p> <p>257.625</p>	<p>SPOKANE APP CON</p> <p>123.75 282.25 208°-028° 133.35 263.0 029°-207°</p>	<p>TOWER</p> <p>120.35 233.7</p>	<p>GND CON</p> <p>123.6 275.8</p>
----------------------------	--	----------------------------------	-----------------------------------



CATET		7000 KNOCK		ELEV 2462	TDZE 2462
					
CATEGORY	A	B	C	D	E
LNAV MDA*	3080-24 618 (700-1/2)		3080-1 3/8 618 (700-1 3/8)		3500-3 1038 (1100-3)
CIRCLING**	3080-1 618 (700-1)		3080-1 3/4 618 (700-1 3/4)	3080-2 618 (700-2)	3500-3 1038 (1100-3)

NW-1, 31 DEC 2020 to 28 JAN 2021

NW-1, 31 DEC 2020 to 28 JAN 2021