
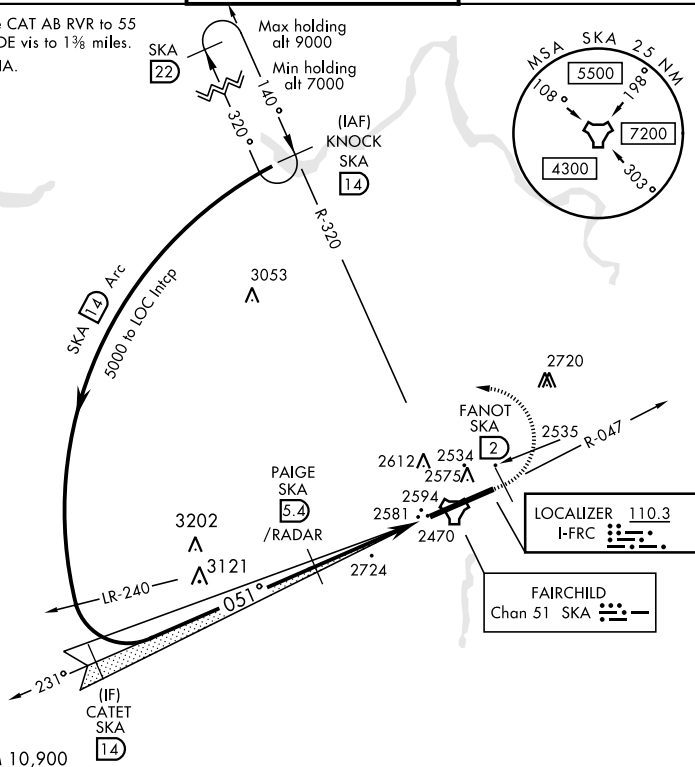


## ILS or LOC RWY 5

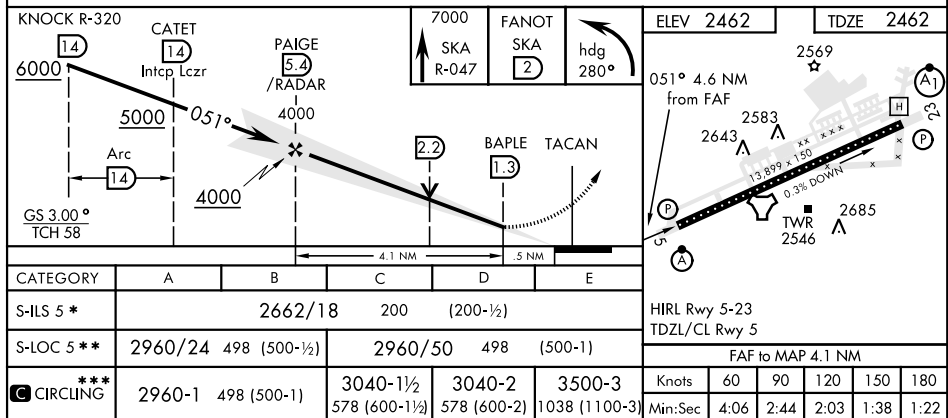
LOC I-FRC <b>110.3</b>	APCH CRS <b>051°</b>	Rwy Idg <b>13,899</b> TDZE <b>2462</b> Arpt Elev <b>2462</b>	AL-553 [USAF]	FAIRCHILD AFB (KSKA)
<p><b>▼</b> * When ALS inop, increase RVR to 40, vis to ¾ mile. When TDZL/CL lights inop, increase CAT ABCDE RVR to 24.</p>			<p>ALSF-2</p> 	<p>MISSED APPROACH: Climb to 7000 vis SKA TACAN R-047. At SKA 2 DME turn left hdg 280° to intcp SKA R-320 to KNOCK and hold, continue climb in hold to 7000.</p>
<p>ATIS</p> <p><b>257.625</b></p>	<p>SPOKANE APP CON</p> <p>209°- 207° <b>133.35 263.0</b> 028°- 028° <b>123.75 282.25</b></p>		<p>FAIRCHILD TOWER</p> <p><b>120.35 233.7</b></p>	<p>GND CON</p> <p><b>123.6 275.8</b></p>

\*\* When ALS inop, increase CAT AB RVR to 55  
 and vis to 1 mile, CAT CDE vis to 1 3/8 miles.  
 \*\*\* Circling S of Rwy 5-23 NA.



RADAR or DME  
REQUIRED

EMERG SAFE ALT 100 NM 10,900



SPOKANE, WASHINGTON

47°37'N-117°39'W

FAIRCHILD AFB (KSKA)

Amdt 5 24MAY18

## ILS or LOC RWY 5