

SPOKANE, WASHINGTON

ILS or LOC RWY 23

LOC I-SKA
110.3

APCH CRS
231°

Rwy Idg **13,899**
TDZE **2423**
Arpt Elev **2462**

AL-553 [USAF]

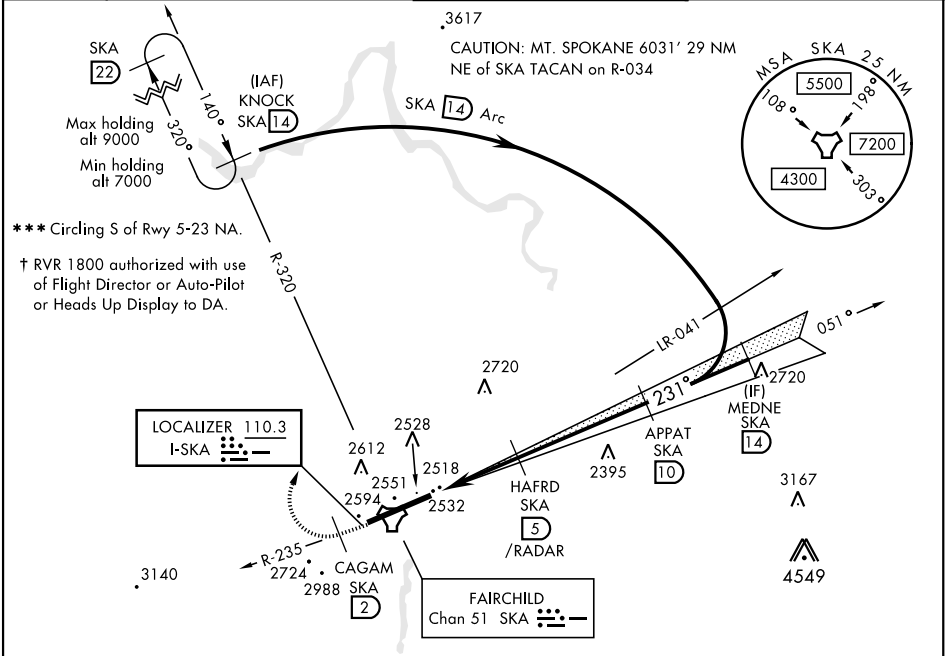
FAIRCHILD AFB (KSKA)

⚠ * When ALS inop, increase RVR to 40 and vis to ¼ mile.
** When ALS inop, increase CAT ABCDE RVR to 55 and vis to 1 mile.

ALSF-1

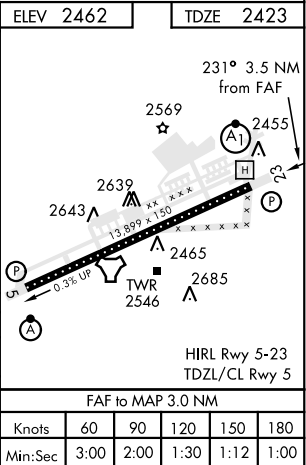
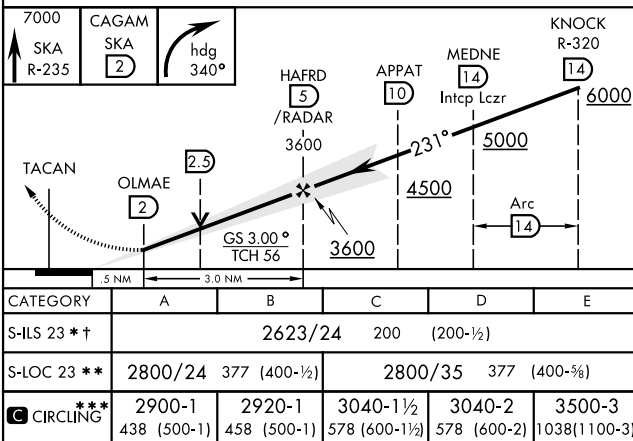
MISSED APPROACH: Climb to 7000 via SKA R-235. At SKA 2 DME, turn right heading 340° to intcp SKA R-320 to KNOCK and hold, continue climb in hold to 7000.

ATIS 257.625	SPOKANE APP CON 029°- 207° 133.35 263.0 208°- 028° 123.75 282.25	FAIRCHILD TOWER 120.35 233.7	GND CON 123.6 275.8
------------------------	--	--	-------------------------------



RADAR or DME REQUIRED

EMERG SAFE ALT 100 NM 10,900



SPOKANE, WASHINGTON

47°37'N-117°39'W

FAIRCHILD AFB (KSKA)

Amdt 3 24MAY18

ILS or LOC RWY 23

NW-1, 31 DEC 2020 to 28 JAN 2021

NW-1, 31 DEC 2020 to 28 JAN 2021