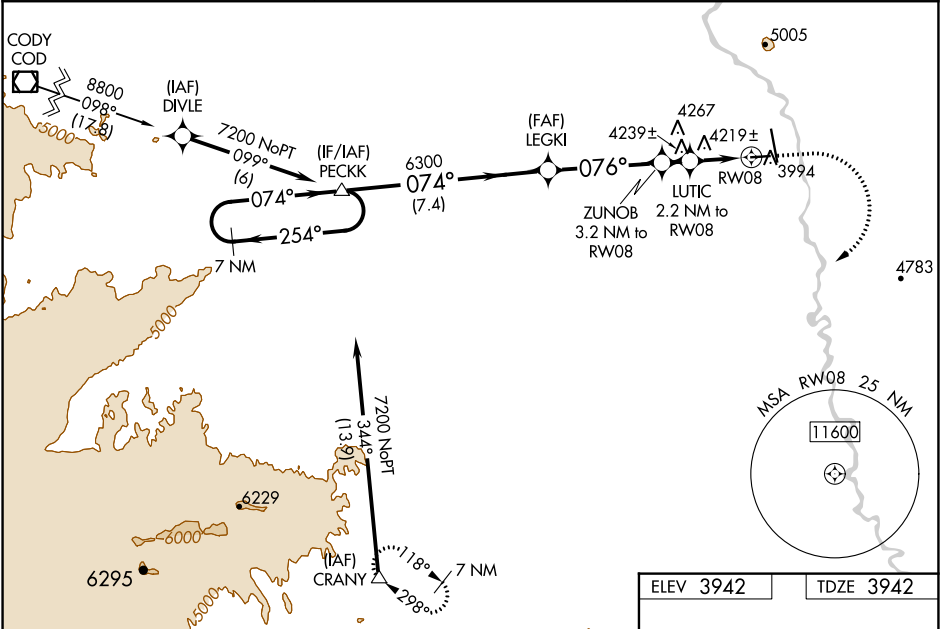


WAAS CH 56530 W08A	APP CRS 076°	Rwy Idg TDZE Apt Elev	3953 3942 3942
--	------------------------	-----------------------------	---

RNAV (GPS) RWY 8
SOUTH BIG HORN COUNTY (GEY)

<p>⚠ DME/DME RNP-0.3 NA. Straight-in minimums NA at night. When local altimeter setting not received use Cowley/Lovell/Byron altimeter setting: increase LPV DA to 4279 feet and LNAV/VNAV DA to 4654 feet. Increase LPV visibility, all Cts 1/4 SM; increase all MDA 100 feet and LNAV Cts C/D visibility 1/4 SM. Rwy 8 helicopter visibility reduction below 3/4 SM NA. Baro-VNAV and VDP NA when using Cowley/Lovell/Byron altimeter setting. For uncompensated Baro-VNAV systems, LNAV/VNAV NA below -26°C (-14°F) or above 51°C (124°F).</p>	<p>⚠ MISSED APPROACH: Climb to 4400 then climbing right turn to 9000 direct CRANY and hold, continue climb-in-hold to 9000.</p>
--	--

ASOS 135.325	SALT LAKE CENTER 127.75 351.9	CTAF 122.9
------------------------	---	----------------------



7 NM Holding Pattern		PECKK	LEGKI	ZUNOB 3.2 NM to RW08	LUTIC 2.2 NM to RW08	*LNAV only
7200		6300	5000	4680		
GP 3.00° TCH 40		7.4 NM	4.1 NM	1 NM	0.6 NM	1.6 NM
CATEGORY		A	B	C	D	
LPV DA		4192-1 250 (300-1)				
LNAV/VNAV DA		4567-2½ 625 (700-2½)				
LNAV MDA		4480-1 538 (600-1)		4480-1½ 538 (600-1½)		
CIRCLING		4680-1 738 (800-1)	4700-1 758 (800-1)	5320-3 1378 (1400-3)	5460-3 1518 (1600-3)	

