

WAAS CH 70608 W06A	APP CRS 051°	Rwy Idg 7400 TDZE 2291 Apt Elev 2320
--	------------------------	---

RNAV (GPS) RWY 6

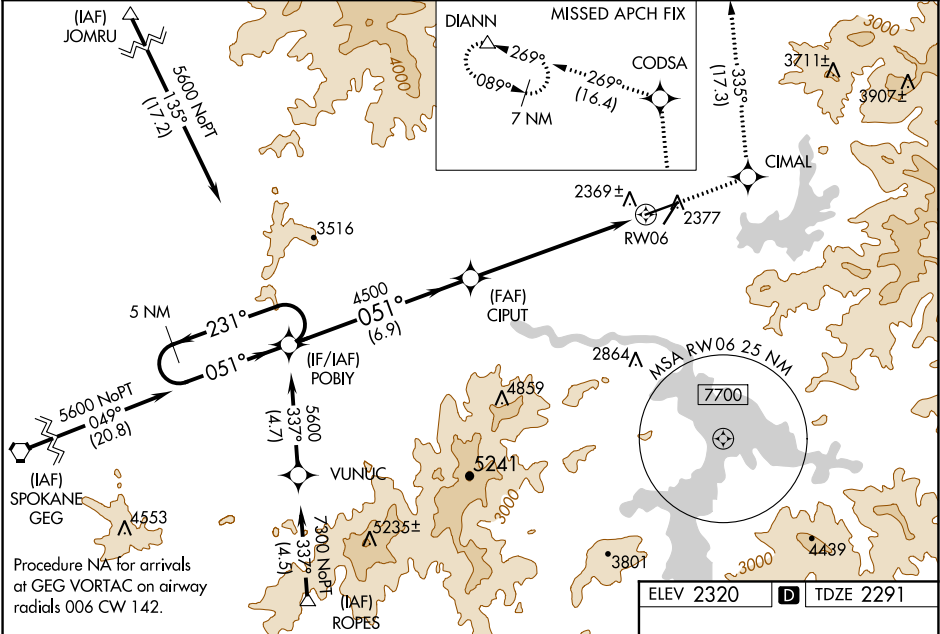
COEUR D'ALENE-PAPPY BOYINGTON FIELD (COE)

⚠ For uncompensated Baro-VNAV systems, LNAV/VNAV NA below -21°C (-5°F) or above 53°C (127°F). DME/DME RNP-0.3 NA. When local altimeter setting not received, use Spokane Intl altimeter setting and increase all DA/MDA 80 feet. Increase LNAV/VNAV all Cats visibility ¼ mile, LNAV Cat C/D visibility ½ mile, and Circling Cat C visibility ½ mile. Baro-VNAV and VDP NA when using Spokane Intl altimeter setting. Night landing: Rwy 2 NA.

MAISR

MISSED APPROACH: Climb to 7000 direct CIMAL and on track 335° to CODSA and on track 269° to DIANN and hold.

AWOS-3PT 135.075	SPOKANE APP CON 132.1 263.0	UNICOM 122.8 (CTAF)
----------------------------	---------------------------------------	-------------------------------



5 NM Holding Pattern		POBIY	<div><div>7000 ↑</div><div>CIMAL </div><div>tr 335°</div><div>CODSA </div><div>tr 269°</div><div>DIANN △</div></div>			
<div>5600 ← 231° 051° →</div>		<div><div>CIPUT 4500</div><div>*1.3 NM to RW06</div><div>RW06</div><div>*LNAV only</div></div>				
GP 3.00° TCH 56		<div><div>4500</div><div>6.9 NM</div><div>5.4 NM</div><div>1.3</div></div>				
CATEGORY	A	B	C	D		
LPV DA	2491-½ 200 (200-½)					
LNAV/ VNAV DA	2654-¾ 363 (400-¾)					
LNAV MDA	2740-½	449 (500-½)	2740-1	449 (500-1)		
CIRCLING	2740-1 420 (500-1)	2860-1 540 (600-1)	2880-1½ 560 (600-1½)	2880-2 560 (600-2)		

ELEV 2320 **D** TDZE 2291

MIRL Rwy 2-20 **1**
HIRL Rwy 6-24 **1**
REIL Rws 2 and 24 **1**