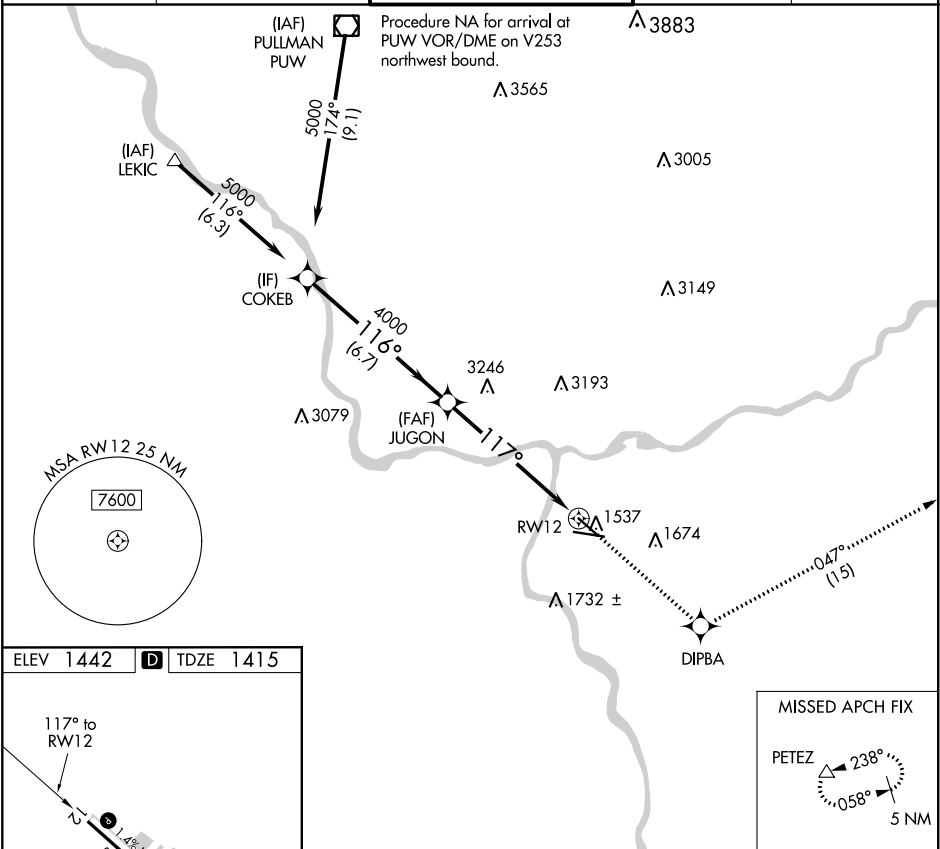


WAAS CH 56500 W12A	APP CRS 117°	Rwy Idg 4750 TDZE 1415 Apt Elev 1442
--	------------------------	---

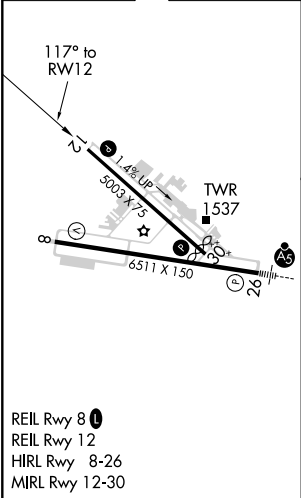
RNAV (GPS) Y RWY 12
LEWISTON-NEZ PERCE COUNTY (LWS)

NA	When local altimeter setting not received, procedure NA. DME/DME RNP-0.3 NA. Helicopter visibility reduction below ¾ SM NA.	MISSED APPROACH: Climb to 5700 direct DIPBA and on track 047° to PETEZ and hold, continue climb-in-hold to 5700.
-----------	--	--

ASOS 135.575	SEATTLE CENTER 123.95 290.55	LEWISTON TOWER ★ 119.4 (CTAF) 0 318.8	GND CON 121.9	UNICOM 122.95
------------------------	--	---	-------------------------	-------------------------



ELEV 1442	D	TDZE 1415
------------------	----------	------------------



VGSI and RNAV glidepath not coincident (VGSI Angle 3.00/TCH 40).				5700	DIPBA	tr 047°	PETEZ
COKEB				JUGON			
5000				4000			
GP 3.87° TCH 55				RWY 12			
6.7 NM				6.3 NM			
CATEGORY	A	B	C	D			
LPV	DA	1793-1	378 (400-1)	NA			

NW-1, 31 DEC 2020 to 28 JAN 2021

NW-1, 31 DEC 2020 to 28 JAN 2021