

APP CRS
084°

Rwy Idg
TDZE
1440

Apt Elev
1442

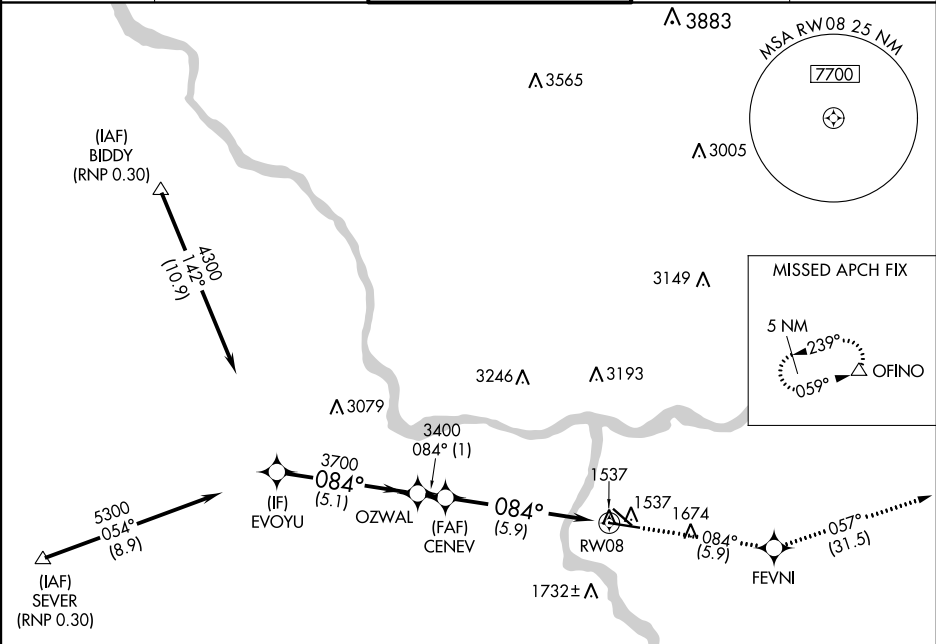
RNAV (RNP) Z RWY 8

LEWISTON-NEZ PERCE COUNTY (LWS)

GPS required. For uncompensated Baro-VNAV systems, procedure NA below -16°C (3°F) or above 46°C (115°F). When VGSI inop, procedure NA at night.

MISSED APPROACH: Climb to 6000 via track 084° to FEVNI and via track 057° to OFINO and hold.

ASOS 135.575	SEATTLE CENTER 123.95 290.55	LEWISTON TOWER ★ 119.4 (CTAF) 0 318.8	GND CON 121.9	UNICOM 122.95
------------------------	--	---	-------------------------	-------------------------



ELEV 1442 TDZE 1440

VGSI and RNAV glidepath not coincident (VGSI Angle 3.00°/TCH 45°).

EVOYU

OZWAL

CENEV

RW08

4300

3700

3400

1537

084°

084°

084°

084°

GP 3.00° TCH 55°

5.1 NM

1 NM

5.9 NM

6000

FEVNI

OFINO

tr 084°

tr 057°

tr 057°

1428

1537

1674

084° to RW08

057° to OFINO

CATEGORY	A	B	C	D
RNP 0.30 DA	1752-1 312 (400-1)			

AUTHORIZATION REQUIRED

REIL Rwy 8 1
REIL Rwy 12
HIRL Rwy 8-26
MIRL Rwy 12-30