

APP CRS	Rwy Idg	4750
117°	TDZE	1415
	Apt Elev	1442

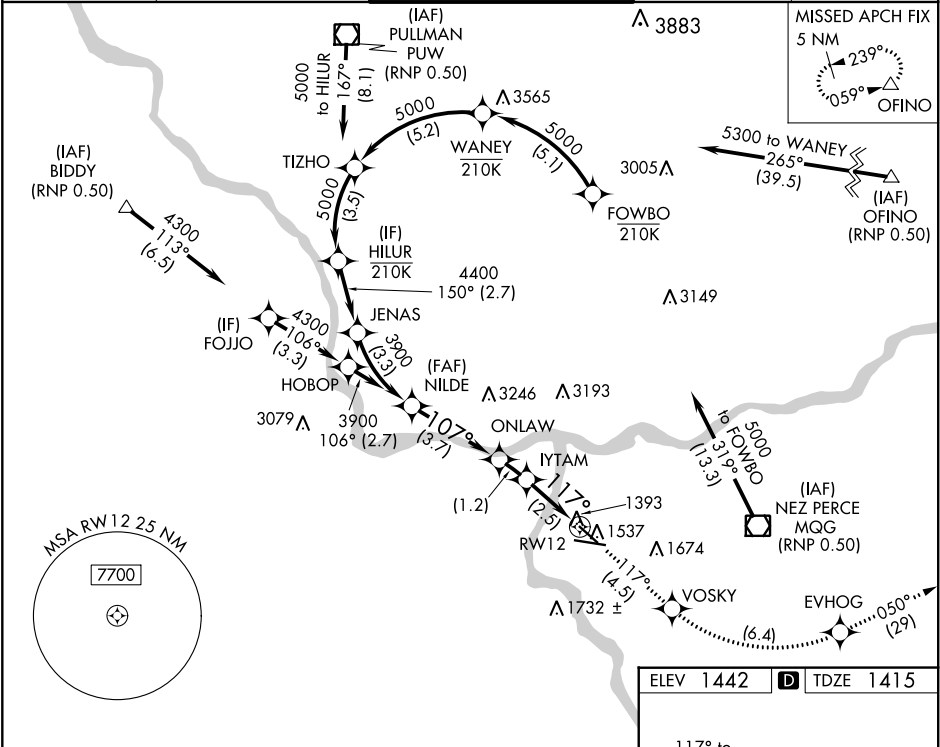
RNAV (RNP) Z RWY 12

LEWISTON-NEZ PERCE COUNTY (LWS)

GPS and RF Required. For uncompensated Baro-VNAV systems, procedure NA below -16°C (3°F) or above 36°C (98°F). Procedure NA at night.  
\* Missed approach requires minimum climb of 260 feet per NM to 3400.

MISSED APPROACH: Climb to 6000 via track 117° to VOSKY and via left turn to EVHOG and via track 050° to OFINO and hold.

ASOS 135.575	SEATTLE CENTER 123.95 290.55	LEWISTON TOWER ★ 119.4 (CTAF) 0 318.8	GND CON 121.9	UNICOM 122.95
-----------------	---------------------------------	--	------------------	------------------



Procedure Turn NA	NILDE	6000	VOSKY	EVHOG	tr 050°	OFINO
	3900	tr 117°				
	3900	ONLAW	IYTAM	RW12		
		2659	2254			
GP 3.10°	See Planview for multiple IF locations.					
TCH 56						
CATEGORY	A	B	C	D		
RNP 0.30 DA*	1683-1	268 (300-1)				
RNP 0.30 DA	1887-1¾	472 (500-1¾)				

ELEV 1442 TDZE 1415

This inset shows a detailed view of the runway and approach area. It includes the runway (RWY 12) and the approach path. Key features include the runway width (6511 X 150), the runway elevation (1442), and the TDZE (1415). The chart also shows the location of the runway lights and the approach path.

REIL Rwy 8  
REIL Rwy 12  
HIRL Rwy 8-26  
MIRL Rwy 12-30

AUTHORIZATION REQUIRED