

VOR/DME JAC  
**115.4**  
Chan **101**

APP CRS  
**193°**

Rwy Idg  
TDZE  
Apt Elev  
**6300**  
**6451**  
**6451**

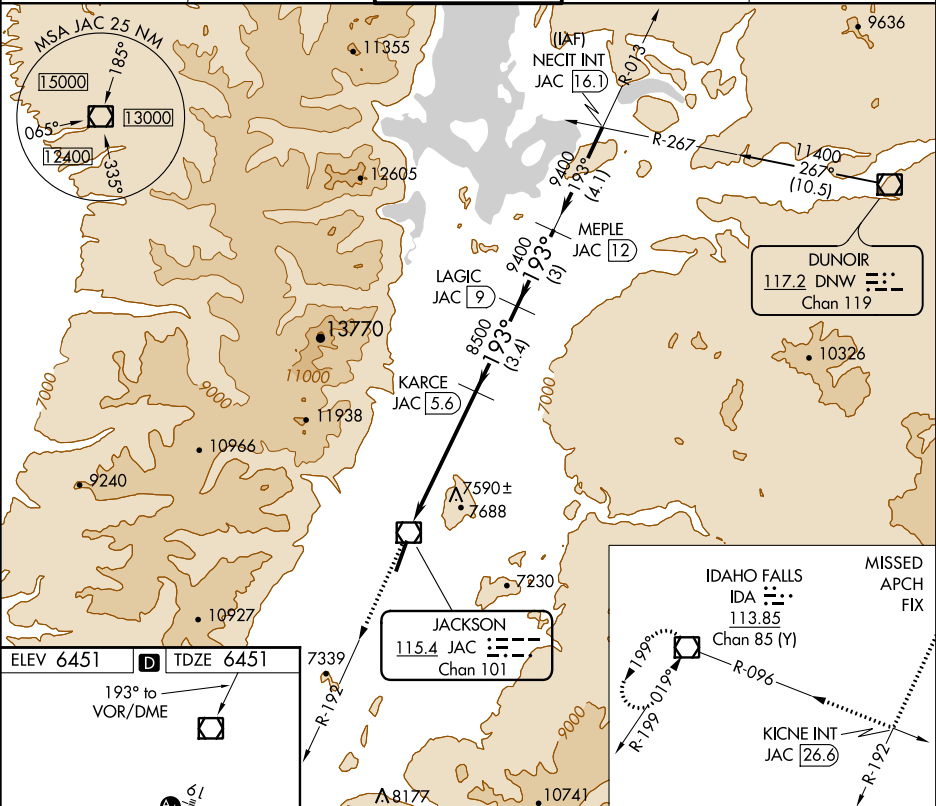
VOR/DME RWY 19  
JACKSON HOLE (JAC)

Circling NA east of Rwy 1-19. Inop table does not apply. If local altimeter setting not received, procedure NA.

MALS

MISSED APPROACH: Climb to 14000 via JAC R-192 to KICNE INT/JAC 26.6 DME, and right turn via IDA R-096 to IDA VOR/DME and hold.

ATIS★ <b>120.625</b>	SALT LAKE CENTER <b>133.25 285.6</b>	JACKSON TOWER★ <b>118.075 (CTAF)</b> <b>0</b>	GND CON <b>124.55</b>	UNICOM <b>122.95</b>
-------------------------	---	--	--------------------------	-------------------------



ELEV 6451

D

TDZE 6451

193° to

VOR/DME

TWR 6506

6477

6466±

0.6% UP

8300

1.50

61

2

3

4

HIRL Rwy 1-19

14000

KICNE INT

IDA

JAC R-192

IDA R-096

JAC 3.9

KARCE JAC 5.6

LAGIC JAC 9

MEPLE JAC 12

VGSI and descent angles not coincident (VGSI Angle 3.00/TCH 53).

3.19°

TCH 38

8500

9400

193°

9400

Procedure Turn NA

0.3

3.9 NM

1.7 NM

3.4 NM

3 NM

CATEGORY	A	B	C	D
S-19	7840-1¼ 1389 (1400-1¼)	7840-1½ 1389 (1400-1½)	7840-3	1389 (1400-3)
CIRCLING	7840-1¼ 1389 (1400-1¼)	7840-1½ 1389 (1400-1½)	7840-3	1389 (1400-3)