

APP CRS

Rwy Idg

006°

TDZE

6300

6431

Apt Elev

6451

RNAV (RNP) Z RWY 1

JACKSON HOLE (JAC)

RNP AR APCH

▽

☼

-21°C

For uncompensated Baro-VNAV systems, procedure NA below -27°C or above 54°C.
Inop table does not apply to RNP 0.11* all Cats visibility.
For inop ALS, increase RNP 0.30* all Cats visibility to ¾ SM.
Missed approach requires RNP less than 1.0.

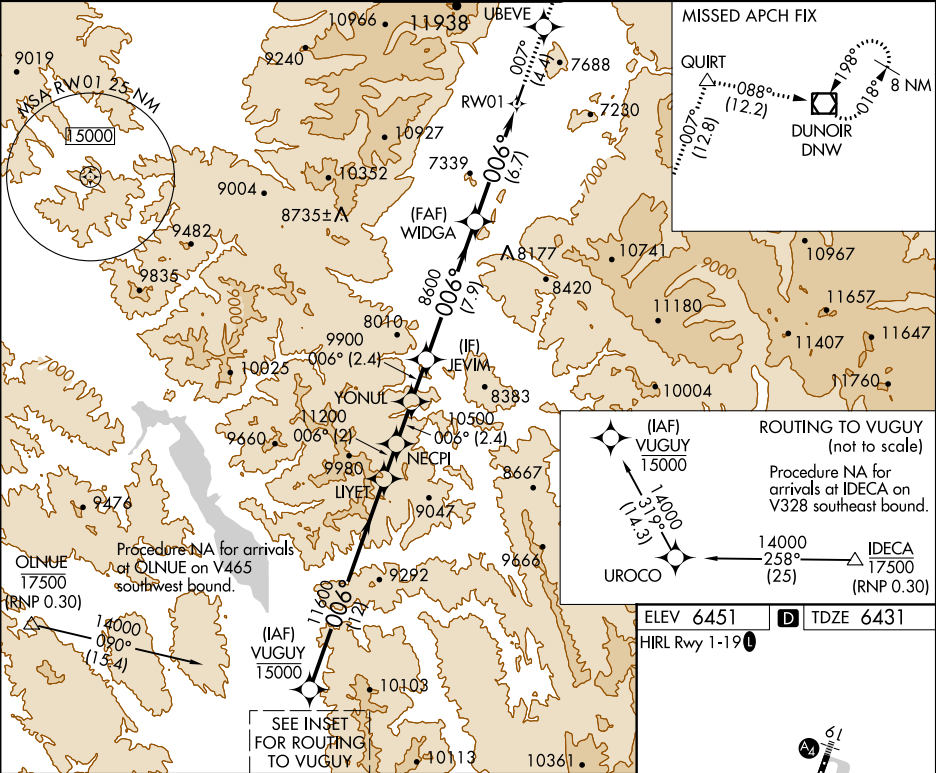
MALS

⬇

A2

MISSED APPROACH: Climb to 14000 on track 007° to UBEVE and track 007° to QUIRT and track 088° to DNW VOR/DME and hold, continue climb-in-hold to 14000.
* Missed approach requires minimum climb of 330 feet per NM to 8200; if unable to meet climb gradient, see RNAV (RNP) Y RWY 1.

ATIS★	SALT LAKE CENTER	JACKSON TOWER★	GND CON	UNICOM
120.625	133.25 285.6	118.075 (CTAF)	124.55	122.95



VUGUY	LYET	NECPI	UBEVE	QUIRT	DNW
14000	11600	11200	10500	9900	8600
GP 3.00°					
TCH 50					
	12 NM	2 NM	2.4	2.4	7.9 NM
					6.7 NM
CATEGORY	A	B	C	D	
RNP 0.11 DA*		6690-¾	259 (300-¾)		
RNP 0.30 DA*		6743-¾	312 (300-¾)		
AUTHORIZATION REQUIRED					

ELEV 6451

HIRL Rwy 1-19

TDZE 6431

