

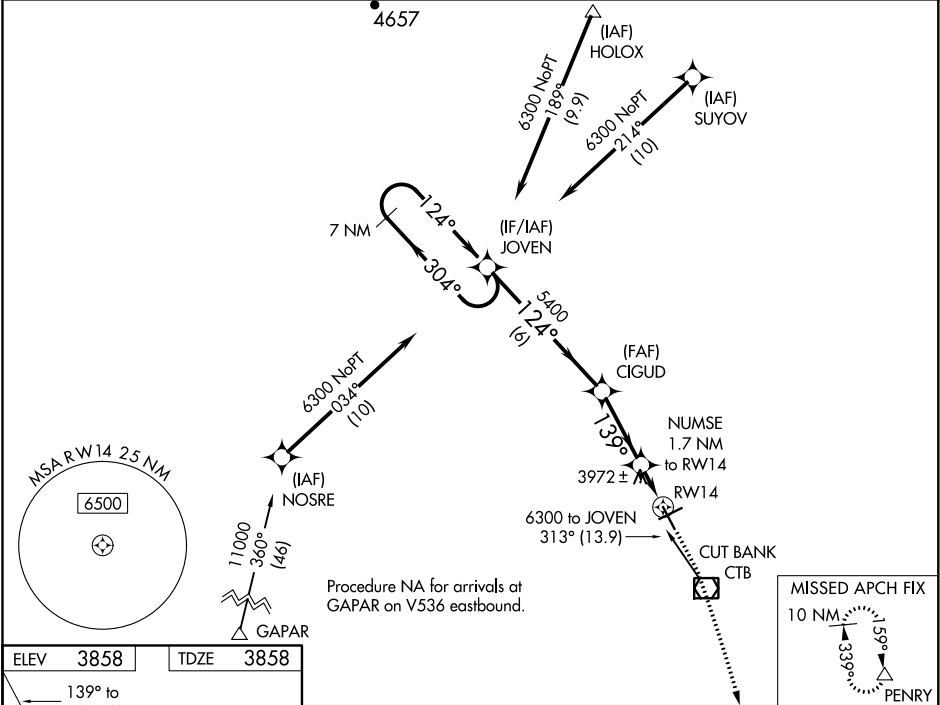
WAAS CH 93537 W14A	APP CRS 139°	Rwy Idg 5300 TDZE 3858 Apt Elev 3858
--	------------------------	---

RNAV (GPS) RWY 14

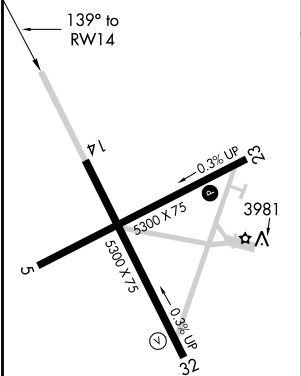
CUT BANK INTL (CTB)

<div><div>⚠</div><div>For uncompensated Baro-VNAV systems, LNAV/VNAV NA below -25°C (-13°F) or above 51°C (124°F). DME/DME RNP-0.3 NA.</div></div>	MISSED APPROACH: Climb to 4400 then climbing right turn to 9000 direct PENRY and hold.
--	--

ASOS 119.025	SALT LAKE CITY CENTER 133.4 285.4	UNICOM 123.0 (CTAF) 0
------------------------	---	---------------------------------



ELEV 3858	TDZE 3858
------------------	------------------



<div>7 NM Holding Pattern</div> <div>JOVEN</div> <div>6300 ← 304°</div> <div>124° →</div> <div>GP 3.00° TCH 52</div>					<div>CIGUD</div> <div>5400</div> <div>NUMSE 1.7 NM to RW14</div> <div>*1 NM to RW14</div> <div>RW14</div> <div>*4440</div> <div>4400 9000 PENRY</div> <div>*LNAV only</div>				
6 NM					3 NM				
CATEGORY	A		B		C		D		
LPV DA			4058-1		200 (200-1)				
LNAV/VNAV DA			4108-1		250 (300-1)				
LNAV MDA	4240-1		382 (400-1)		4240-1½		382 (400-1½)		
CIRCLING	4280-1 422 (500-1)		4320-1 462 (500-1)		4400-1½ 542 (600-1½)		4620-2½ 762 (800-2½)		

NW-1, 31 DEC 2020 to 28 JAN 2021

NW-1, 31 DEC 2020 to 28 JAN 2021