

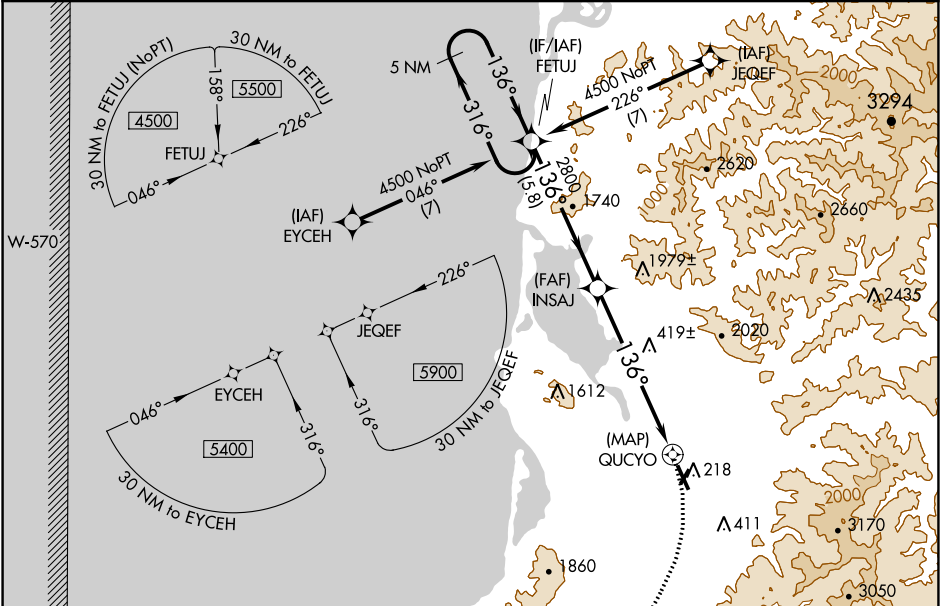
APP CRS	Rwy Idg	5001
136°	TDZE	31
	Apt Elev	39

RNAV (GPS) RWY 13

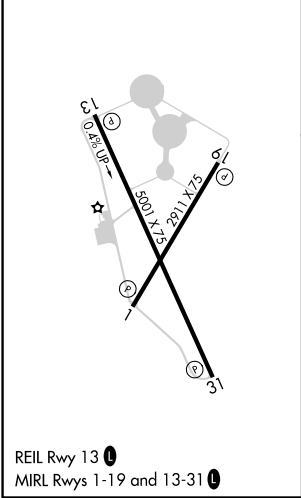
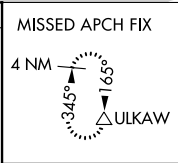
TILLAMOOK (TMK)

<p>NA DME/DME RNP-0.3 NA. When local altimeter setting not received, use Astoria altimeter setting and increase all MDA by 540 feet; increase LNAV visibility Cat A 1 ¼, Cat B 1 ½, and Cat C 1 mile and Circling visibility Cats B and C ¼ mile. Night Landing: Rwy 1, 19 NA. Helicopter visibility reduction below ¾ SM NA.</p>	<p>MISSED APPROACH: Climbing right turn to 5000 direct ULKAW and hold, continue climb-in-hold to 5000.</p>
--	---

AWOS-3 120.0	SEATTLE CENTER 124.2 317.6	UNICOM 122.8 (CTAF) 0
------------------------	--------------------------------------	---------------------------------



ELEV 39	TDZE 31
---------	---------



Visual Segment - Obstacles.				5000	ULKAW
5 NM Holding Pattern					
FETUJ				INS AJ	QUCYO
4500				2800	
316°				136°	
136°					
5.8 NM				6.5 NM	0.5
CATEGORY	A	B	C	D	
LNAV MDA	760-1	729 (800-1)	760-2	729 (800-2)	NA
CIRCLING	880-1 ¼ 841 (900-1 ¼)	920-1 ¼ 881 (900-1 ¼)	920-2 ¾ 881 (900-2 ¾)		NA