

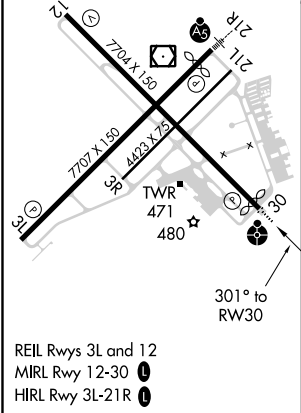
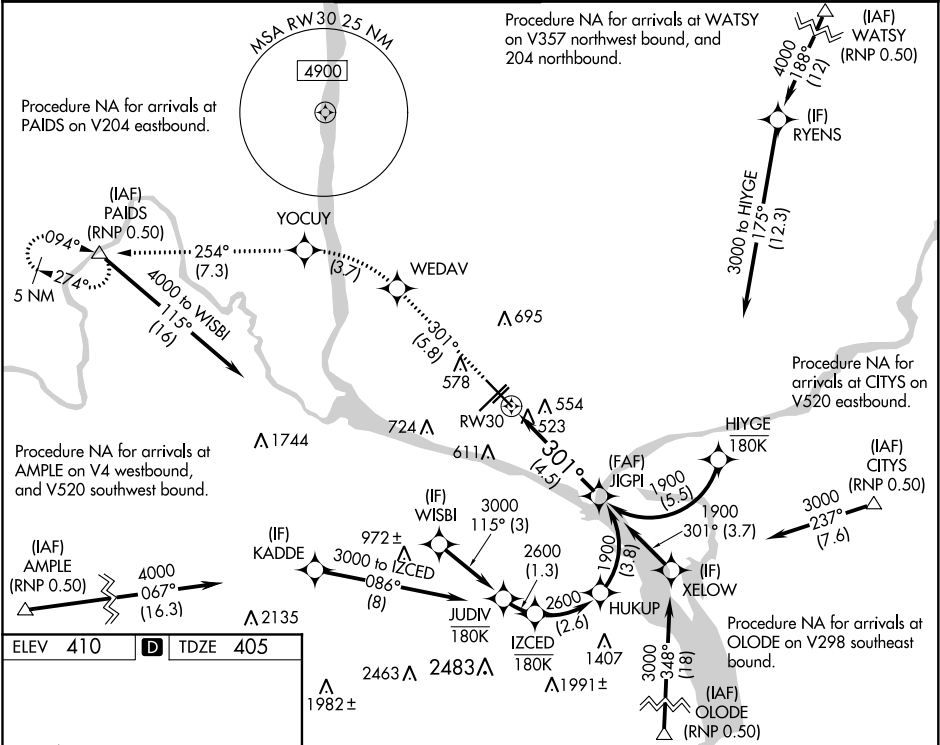
APP CRS	Rwy Idg	7504
301°	TDZE	405
	Apt Elev	410




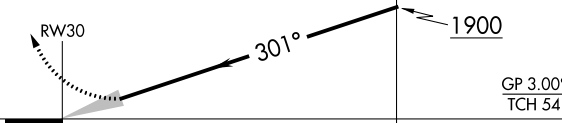
RNAV (RNP) Z RWY 30

TRI-CITIES (PSC)

<p>▼ For uncompensated Baro-VNAV systems, procedure NA below -14°C (7°F) or above 54°C (130°F). RF required. GPS required. For inoperative ODALS, increase RNP 0.11 visibility all Cats to 1¼ mile, and increase RNP 0.30 visibility all Cats to 1½ mile.</p>	<p>ODALS</p>	<p>MISSED APPROACH: Climb to 5200 on track 301° to WEDAV, left turn to YOCUY, and on track 254° to PAIDS and hold.</p>
---	--------------	--

ATIS 125.65	CHINOOK APP CON* 128.75 377.2	TRI-CITIES TOWER* 135.3 (CTAF) 0 323.3	GND CON 121.8	CLNC DEL 120.0	UNICOM 122.95
----------------	----------------------------------	---	------------------	-------------------	------------------



5200 ↑ tr 301°	WEDAV 		YOCUY 	tr 254°	PAIDS △	JIGPI 1900
See planview for multiple IF locations.						
						
CATEGORY	A	B	C	D		
RNP 0.11 DA	778-1½ 373 (400-1½)					
RNP 0.30 DA	834-1¼ 429 (500-1¼)					
AUTHORIZATION REQUIRED						

NW-1, 31 DEC 2020 to 28 JAN 2021

NW-1, 31 DEC 2020 to 28 JAN 2021