

LOC/DME I-PSC <b>108.7</b> Chan <b>24</b>	APP CRS <b>211°</b>	Rwy Idg <b>7110</b> TDZE <b>404</b> Apt Elev <b>410</b>
---	------------------------	---

ILS or LOC RWY 21R  
TRI-CITIES (PSC)

DME required for LOC only.

▼ VDP NA when using Hermiston altimeter setting. When local altimeter setting not received, use Hermiston altimeter setting and increase all DA 95 feet and all MDA 100 feet; increase S-LOC 21R Cat C and D visibility  $\frac{3}{4}$  mile and Circling Cat C and D visibility  $\frac{1}{4}$  mile.

▲ For inop ALS when using Hermiston altimeter setting, increase S-LS 21R all Cats visibility to RVR 4500, increase S-LOC 21R Cats C and D visibility to 1  $\frac{1}{2}$  SM.

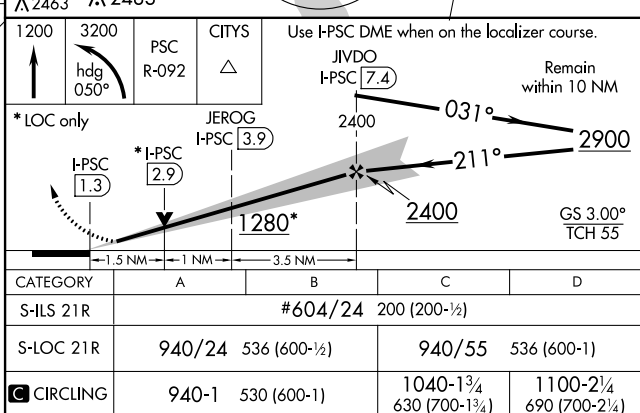
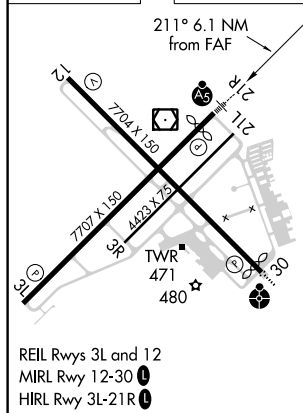
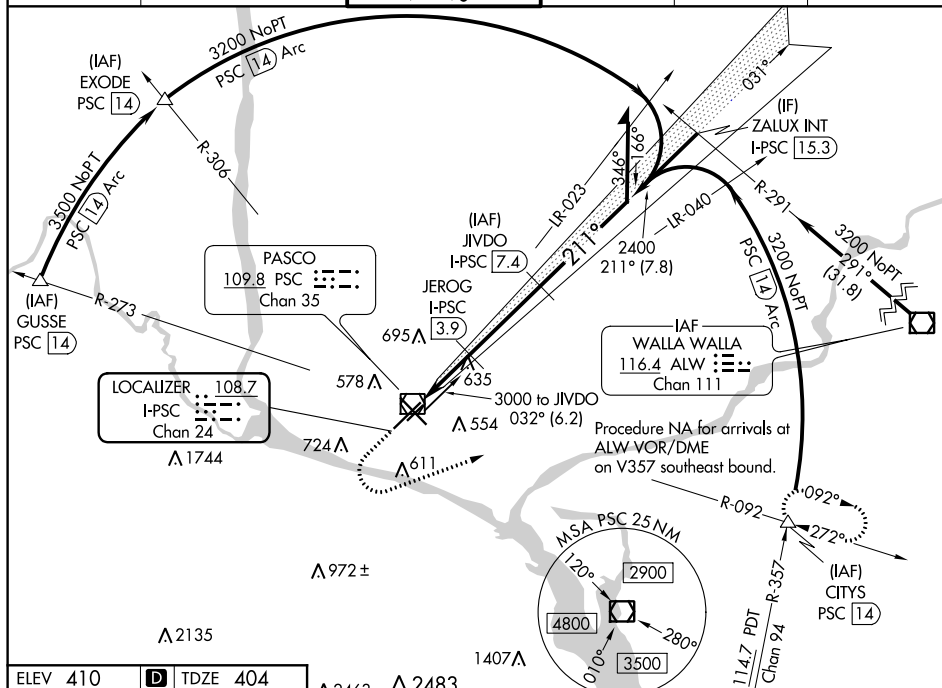
#RVR 1800 authorized with use of FD or AP or HUD to DA (NA when using Hermiston altimeter setting).

MALSR

**MISSED APPROACH:**  
Climb to 1200 then  
climbing left turn to 3200  
on heading 050° and  
PSC VOR/DME R-092 to  
CITYS INT/PSC VOR/DME  
14 DME and hold.

ATIS 125.65	CHINOOK APP CON ★ 128.75 377.2	TRI-CITIES TOWER ★ 135.3 (CTAF) 0 323.3	GND CON 121.8	CLNC DEL 120.0	UNICOM 122.95
----------------	-----------------------------------	--	------------------	-------------------	------------------



## ILS or LOC RWY 21R

NW-1, 31 DEC 2020 to 28 JAN 2021