

WAAS CH 90512 W27A	APP CRS 274°	Rwy Idg 7604 TDZE 1068 Apt Elev 1099
--	------------------------	---

RNAV (GPS) X RWY 27

YAKIMA AIR TERMINAL/MCALLISTER FIELD (YKM)

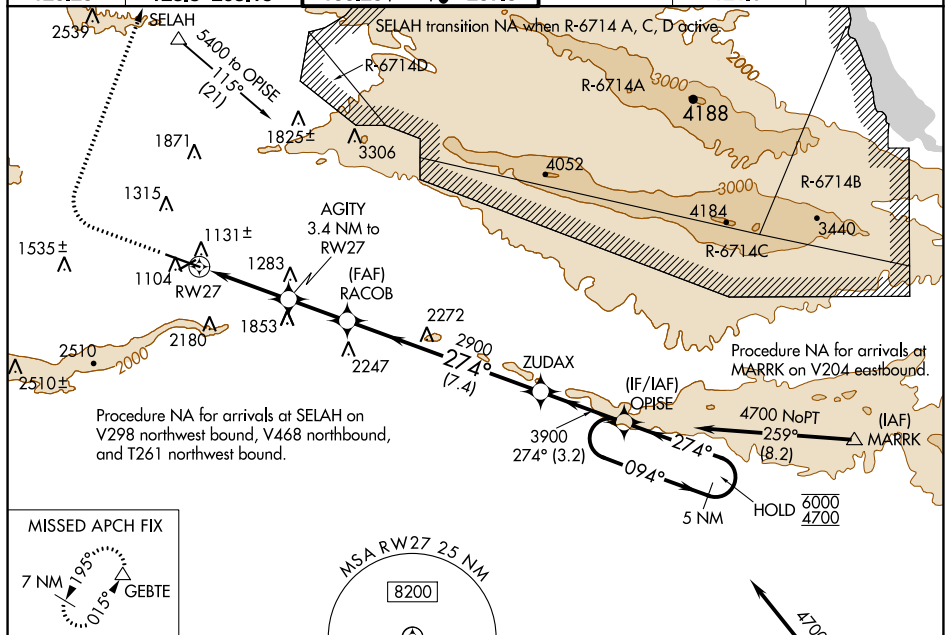
RNP APCH.

- T** Circling NA south of Rwy 9 and 27.
A For inop ALS, increase LPV all Cats visibility to 1¾ SM.
 *RVR 1800 authorized with use of FD or AP or HUD to DA.

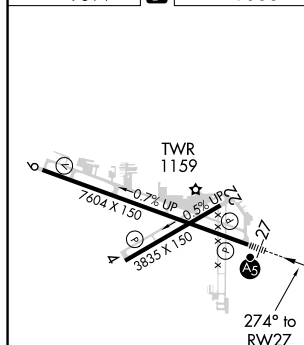
MALSR
A5

MISSED APPROACH: Climb to 2100 then climbing right turn to 7000 direct GEBTE and hold. Continue climb-in-hold to 7000. *Missed approach requires minimum climb of 300 feet per NM to 3700. #Missed approach requires minimum climb of 300 feet per NM to 4900.

ATIS 125.25	CHINOOK APP CON★ 123.8 263.15	YAKIMA TOWER★ 133.25 (CTAF) 0 257.8	GND CON 121.9	CINC DEL 121.9	UNICOM 122.95
----------------	----------------------------------	--	------------------	-------------------	------------------



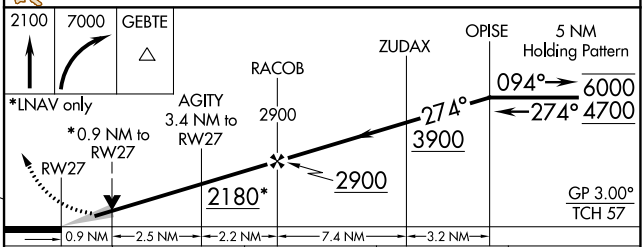
ELEV 1099	D	TDZE 1068
-----------	----------	-----------




MIRL Rwy 4-22
HIRL Rwy 9-27 **L**
REIL Rwy 4, 9, and 22



Procedure NA for arrivals at SUNED
on V4-298 southeast bound, V497
northeast bound, and V497 southbound.



CATEGORY		A	B	C	D
LPV	DA*	1268/24 200 (200-½)			
LPV	DA	1668-1¼ 600 (600-1¼)			
LNAV	MDA#	1400/24 332 (400-½)	1400/26 332 (400-½)		
LNAV	MDA	1720/24 652 (700-½)	1720-1⅜ 652 (700-1⅝)		
 CIRCLING		1720-1 621 (700-1)	1880-2¼ 781 (800-2¼)	2280-3 1181 (1200-3)	