

OAK HARBOR, WASHINGTON

RNAV (GPS) RWY 7

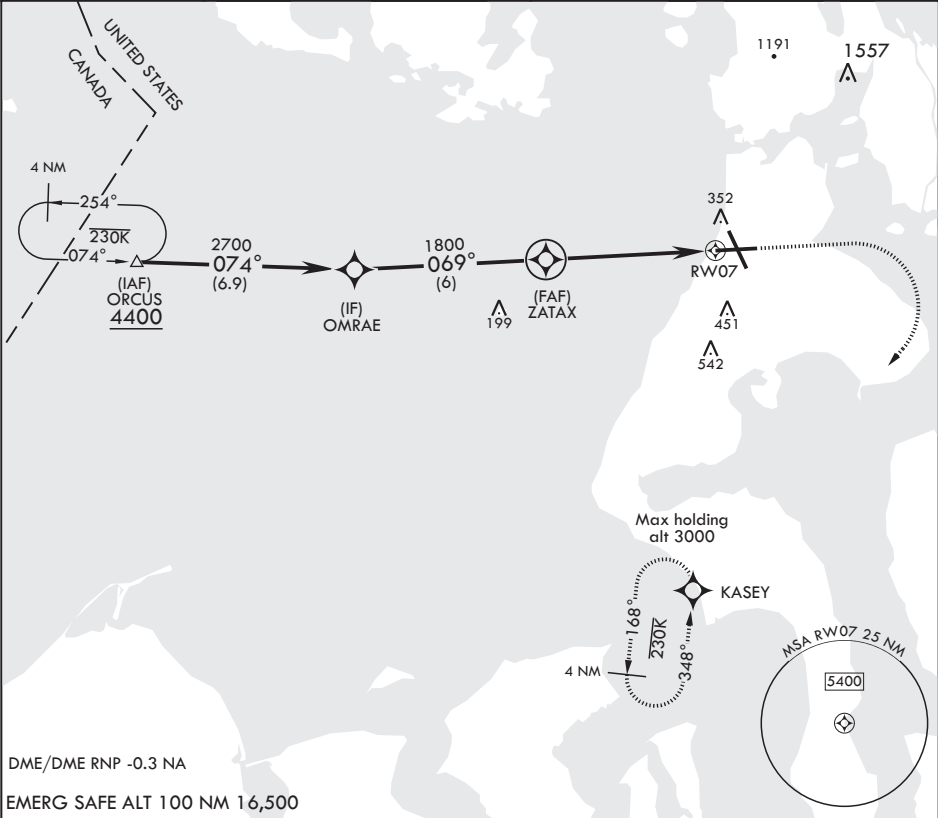
APCH CRS	Rwy Idg	8000
069°	TDZE	25
	Arprt Elev	47

AL-451 (USN)

WHIDBEY ISLAND NAS (KNUW)

	MISSED APPROACH: Climb to 1500, then climbing right turn to 3000 direct KASEY and hold. Do not exceed 230 KIAS until turn completion.
--	---

ATIS 134.15 281.5	APP CON/DEP CON 118.2 285.65 W 120.7 270.8 E	TOWER 127.9 340.2	GND CON 121.75 336.4	CLNC DEL 135.1 379.9	ASR/PAR
----------------------	--	----------------------	-------------------------	-------------------------	---------



ORCUS		OMRAE		ZATAX		RW07		ELEV 47		TDZE 25	
4400		2700		1800		1.1 NM to RW07		069°		KASEY	
074°		069°						crs 069°		3000	
3.05° ≥ TCH 49											
				5.4 NM							
CATEGORY		A		B		C		D			
LNAV MDA		420-1		395 (400-1)		420-1 1/8		395 (400-1 1/8)			
CIRCLING		700-1 653 (700-1)		800-1 753 (800-1)		900-2 1/2 853 (900-2 1/2)		900-2 3/4 853 (900-2 3/4)		TDZL/CL Rwy 14 HIRL all Rwy	

OAK HARBOR, WASHINGTON

48°21'N - 122°39'W

WHIDBEY ISLAND NAS (KNUW)

Amdt 1 21MAY20

RNAV (GPS) RWY 7

NW-1, 31 DEC 2020 to 28 JAN 2021

NW-1, 31 DEC 2020 to 28 JAN 2021