

OAK HARBOR, WASHINGTON

RNAV (GPS) RWY 32

APCH CRS	Rwy Idg	8000
317°	TDZE	47
	Arpt Elev	47

AL-451 (USN)

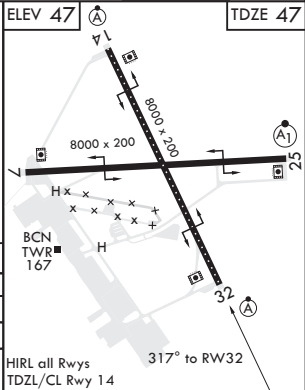
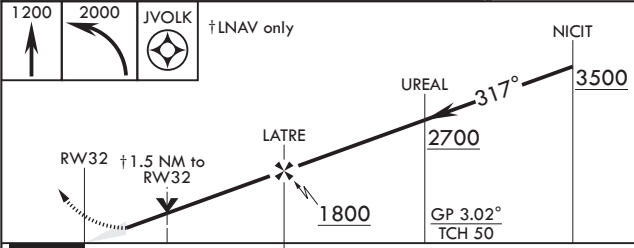
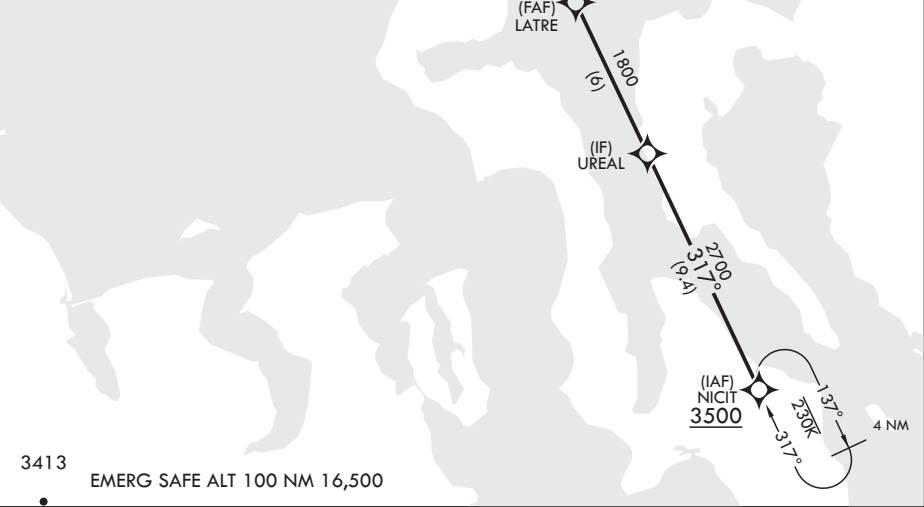
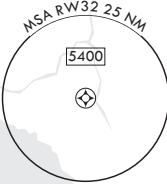
WHIDBEY ISLAND NAS (AULT FLD) (KNUW)

<p>▼ * When ALS inop, increase vis to 1 3/8 miles. ** When ALS inop, increase CAT AB vis to 1 mile, CAT CD vis to 1 1/2 miles.</p>	<p>ALSF-2</p> 	<p>MISSED APPROACH: Climb to 1200 then climbing left turn to 2000 direct JVOLK and hold.</p>
--	---	--

ATIS 134.15 281.5	APP CON/DEP CON 118.2 285.65 W 120.7 270.8 E	TOWER 127.9 340.2	GND CON 121.75 336.4	CLNC DEL 135.1 379.9	ASR/PAR
----------------------	--	----------------------	-------------------------	-------------------------	---------

DME/DME RNP-0.3 NA

For uncompensated Baro-VNAV systems, Procedure NA below -15°C (5°F) or above 54°C (130°F).



CATEGORY	A	B	C	D
RNAV/VNAV DA*	492-7/8	445	(500-7/8)	
RNAV MDA**	580-1/2 533 (600-1/2)	580-1 533 (600-1)	900-2 1/2 853 (900-2 1/2)	900-2 3/4 853 (900-2 3/4)
CIRCLING	700-1 653 (700-1)	800-1 753 (800-1)	900-2 1/2 853 (900-2 1/2)	900-2 3/4 853 (900-2 3/4)

OAK HARBOR, WASHINGTON

48°21'N - 122°39'W

WHIDBEY ISLAND NAS (AULT FLD) (KNUW)

Amdt 1 21MAY20

RNAV (GPS) RWY 32

NW-1, 31 DEC 2020 to 28 JAN 2021

NW-1, 31 DEC 2020 to 28 JAN 2021