

LOC I-ALW 111.7	APP CRS 196°	Rwy Idg TDZE 1194 Apt Elev 1194
---------------------------	------------------------	---

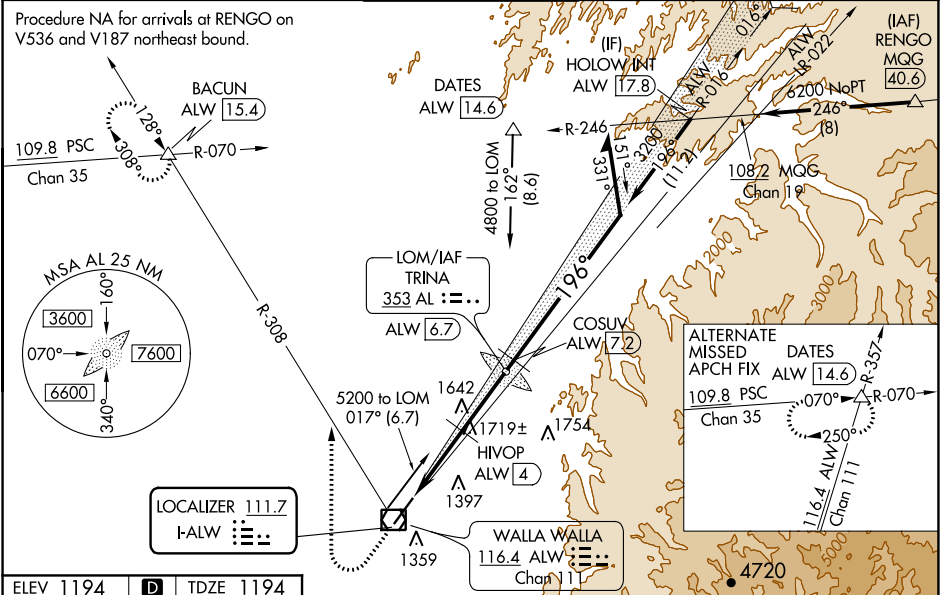
ILS Y or LOC RWY 20
WALLA WALLA RGNL (ALW)

⚠ VDP NA when using Pendleton altimeter setting. When local altimeter setting not received, use Pendleton altimeter setting and increase all DA and all MDA 120 feet. Increase S-ILS 20 visibility all Cats to RVR 3200, S-LOC 20 Cat A/C/D visibility ½ mile. Increase HIVOP DME FIX S-LOC 20 Cat A/C/D visibility ¼ mile, and Circling Cat A and C visibility ¼ mile. For inoperative MALSR, when using Pendleton altimeter setting increase S-ILS 20 all Cats visibility to RVR 5500. For inoperative MALSR increase HIVOP DME FIX minimums S-LOC 20 Cat C/D visibility ¾ mile. Inoperative table does not apply to S-LOC 20 Cat A, C, and D visibility when using Pendleton altimeter setting. # RVR 1800 authorized with use of FD or AP or HUD to DA.

MALS

MISSED APPROACH:
Climb to 1800 then climbing right turn to 4000 on heading 340° and ALW VOR/DME R-308 to BACUN INT/ALW 15.4 DME and hold.

ASOS 135.875	CHINOOK APP CON ★ 133.15 379.15	WALLA WALLA TOWER ★ 118.5 (CTAF) 289.4	GND CON 121.6 289.4	UNICOM 122.95
------------------------	---	--	-------------------------------	-------------------------



ELEV 1194 **D** **TDZE 1194**

196° 5.7 NM from FAF

REIL Rwy 20
HIRL Rwy 2-20

FAF to MAP 5.7 NM

1800 **4000** **ALW R-308** **BACUN** **TRINA LOM ALW 6.7** **6000** **COSUV ALW 7.2** **3700** **3200** **3200** **2280*** **2.3 NM** **0.7** **2.7 NM** **0.5** **Remain within 10 NM** **GS 3.00° TCH 50**

*2400 when using Pendleton altimeter setting.
*LOC only.

ALW 1 **ALW 3.3** **ALW 4** **ALW 7.2** **3071** **3200** **3200** **2280***

CATEGORY	A	B	C	D
S-ILS 20 #	1394/24	200 (200-½)		
S-LOC 20	2280/40 1086 (1100-¾)	2280/55 1086 (1100-1)	2280-2½ 1086 (1100-2½)	2300-3 1106 (1200-3)
C CIRCLING	2280-1¼ 1086 (1100-1¼)	2280-1½ 1086 (1100-1½)	2280-3 1086 (1100-3)	2300-3 1106 (1200-3)
HIVOP DME FIX MINIMUMS				
S-LOC 20	1980/24 786 (800-½)	1980/40 786 (800-¾)	1980-1¾ 786 (800-1¾)	
C CIRCLING	1980-1 786 (800-1)	1980-1¼ 786 (800-1¼)	2120-2¾ 926 (1000-2¾)	2300-3 1106 (1200-3)

NW-1, 31 DEC 2020 to 28 JAN 2021

NW-1, 31 DEC 2020 to 28 JAN 2021