

ATIS
135.825 270.1
GND CON
118.175 279.65
MCCHORD TOWER
124.8 259.3
SEATTLE DEP CON
126.5 377.15


If unable to make ATC charted crossing
restrictions advise ATC prior to departure.

Maximum 250 KIAS

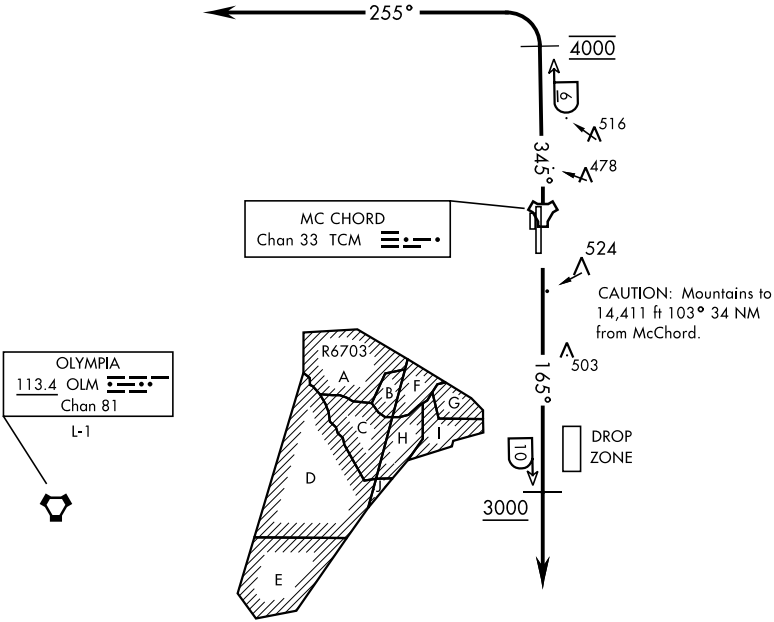
SEATTLE

116.8 SEA


Chan 115



L-1



RADAR REQUIRED

- 
- DEPARTURE ROUTE DESCRIPTION
- TAKE-OFF RWY 16: Climb on track of 165° to cross TCM TACAN 10 DME at or above 3000. Expect radar vectors within TCM 8 DME. Maintain ATC assigned altitude.
- TAKE-OFF RWY 34: Climb on track 345° to cross TCM TACAN 6 DME at 4000. Then turn left tracking 255° to expect radar vectors. Maintain ATC assigned altitude.

NW-1, 31 DEC 2020 to 28 JAN 2021

NW-1, 31 DEC 2020 to 28 JAN 2021