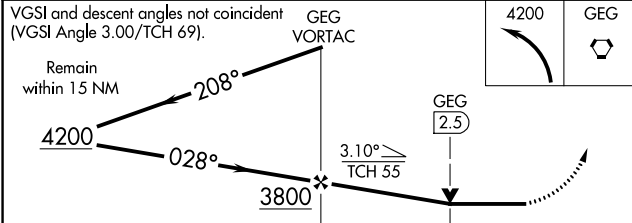
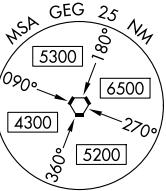
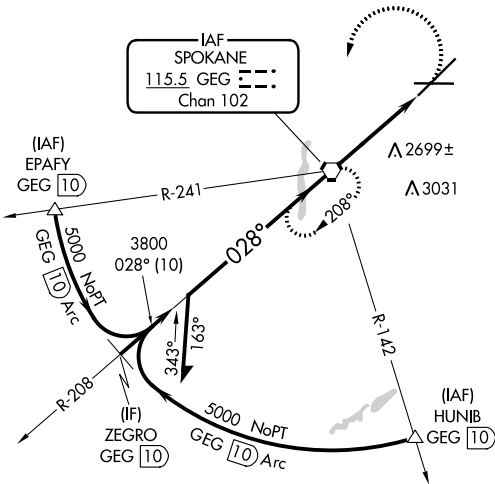


VORTAC GEG	APP CRS	Rwy Idg	11002
115.5	028°	TDZE	2385
Chan 102		Apt Elev	2385

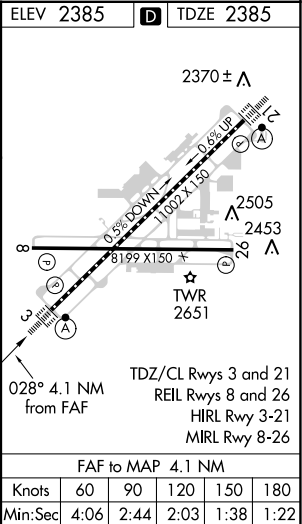
VOR RWY 3  
SPOKANE INTL (GEG)

<p><b>⚠</b> Circling NA for Cat E southeast of Rwy 3-21. For inop ALS, increase S-3 Cat C/D/E visibility to 1 ½ SM.</p>	<p>ALSF-2</p>	<p>MISSED APPROACH: Climbing left turn to 4200 direct GEG VORTAC and hold, continue climb-in-hold to 4200.</p>
---	---------------	--

ATIS	SPOKANE APP CON	SPOKANE TOWER	GND CON	CLNC DEL
124.325 254.375	123.75 282.25 (205°-025°) 133.35 263.0 (026°-204°)	118.3 278.3	121.9 348.6	127.55



CATEGORY	A	B	C	D	E
S-3	2960/24	575 (600-½)	2960-1¼	575 (600-1¼)	
CIRCLING	2960-1 575 (600-1)	2980-1 595 (600-1)	3300-2¾ 915 (1000-2¾)	3400-3	1015 (1100-3)



NW-1, 31 DEC 2020 to 28 JAN 2021

NW-1, 31 DEC 2020 to 28 JAN 2021