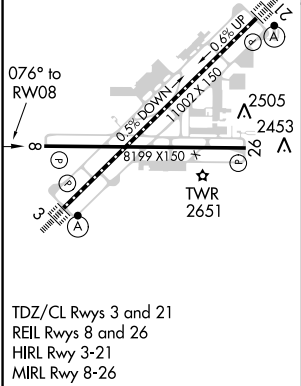
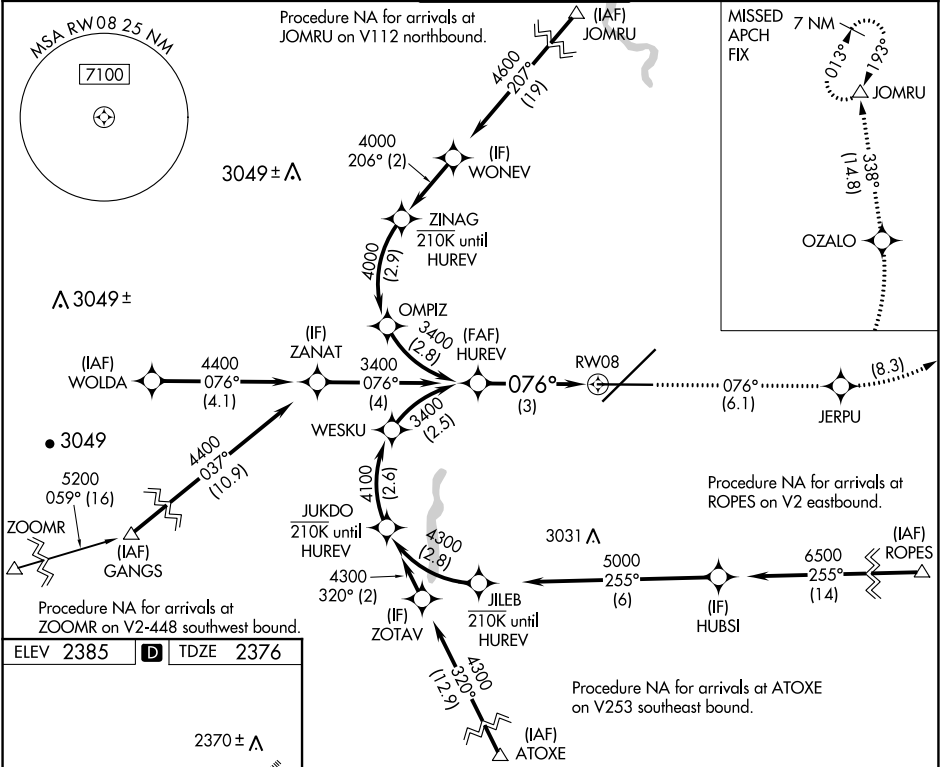


APP CRS	Rwy Idg	8199
076°	TDZE	2376
	Apt Elev	2385

RNAV (RNP) Z RWY 8
SPOKANE INTL (GEG)

RNP AR APCH. RF required.	MISSED APPROACH: Climb to 7000 on track 076° to JERPU, left turn to OZALO, and on track 338° to JOMRU and hold.
▼ For uncompensated Baro-VNAV systems, procedure NA below -18°C or above 53°C.	

ATIS	SPOKANE APP CON	SPOKANE TOWER	GND CON	CLNC DEL
124.325 254.375	123.75 282.25 (205°-025°) 133.35 263.0 (026°-204°)	118.3 278.3	121.9 348.6	127.55



<div>HUREV 3400</div>		<div>7000 ↑ tr 076°</div>		<div>JERPU ✧ ↶</div>		<div>OZALO ✧ tr 338°</div>		<div>JOMRU △</div>	
<div>3400</div>		<div>VGSI and RNAV glidepath not coincident. (VGSI Angle 3.00/TCH 45).</div>							
<div>GP 3.00° TCH 60</div>		<div>076°</div>							
		<div>See planview for multiple IF locations.</div>							
		<div>3 NM</div>							
CATEGORY		A		B		C		D	
RNP 0.11 DA		<div>2665-7⁄8 289 (300-7⁄8)</div>							
RNP 0.30 DA		<div>2869-13⁄8 493 (500-13⁄8)</div>							
<div>AUTHORIZATION REQUIRED</div>									

NW-1, 31 DEC 2020 to 28 JAN 2021

NW-1, 31 DEC 2020 to 28 JAN 2021