

LOC/DME I-OLJ <b>111.1</b> Chan <b>48</b>	APP CRS <b>031°</b>	Rwy Idg TDZE <b>2385</b> Apt Elev <b>2385</b>
---	------------------------	---

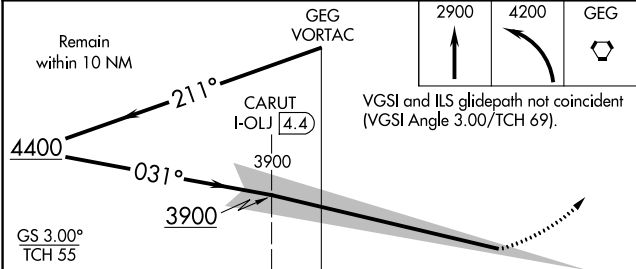
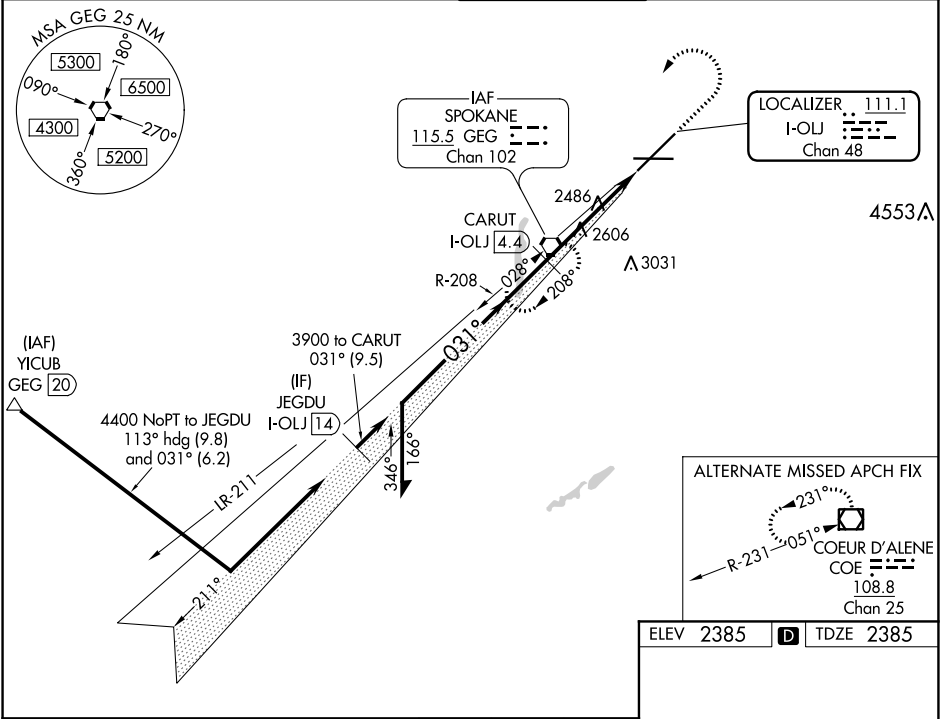
ILS RWY 3 (SA CAT I)  
SPOKANE INTL (GEG)

**⚠** Requires specific OPSPEC, MSPEC, or LOA approval and use of HUD to DH.

ALSF-2

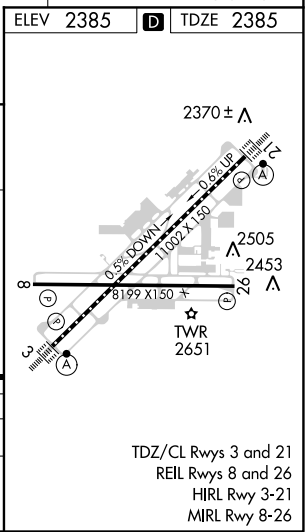
MISSED APPROACH: Climb to 2900 then climbing left turn to 4200 direct GEG VORTAC and hold.

ATIS <b>124.325 254.375</b>	SPOKANE APP CON <b>123.75 282.25</b> (205°-025°) <b>133.35 263.0</b> (026°-204°)	SPOKANE TOWER <b>118.3 278.3</b>	GND CON <b>121.9 348.6</b>	CLNC DEL <b>127.55</b>
--------------------------------	--	-------------------------------------	-------------------------------	---------------------------



CATEGORY	A	B	C	D
S-ILS 3	RA 154/14 150 DA 2535			

SA CATEGORY I ILS - SPECIAL AIRCREW & AIRCRAFT CERTIFICATION REQUIRED



NW-1, 31 DEC 2020 to 28 JAN 2021

NW-1, 31 DEC 2020 to 28 JAN 2021