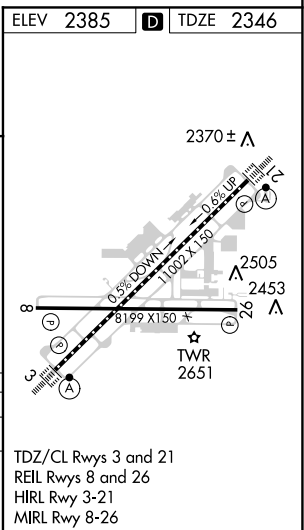
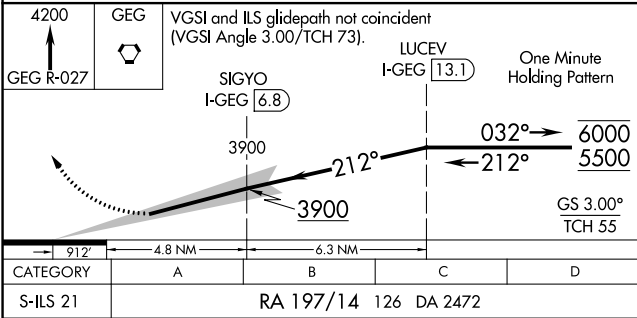
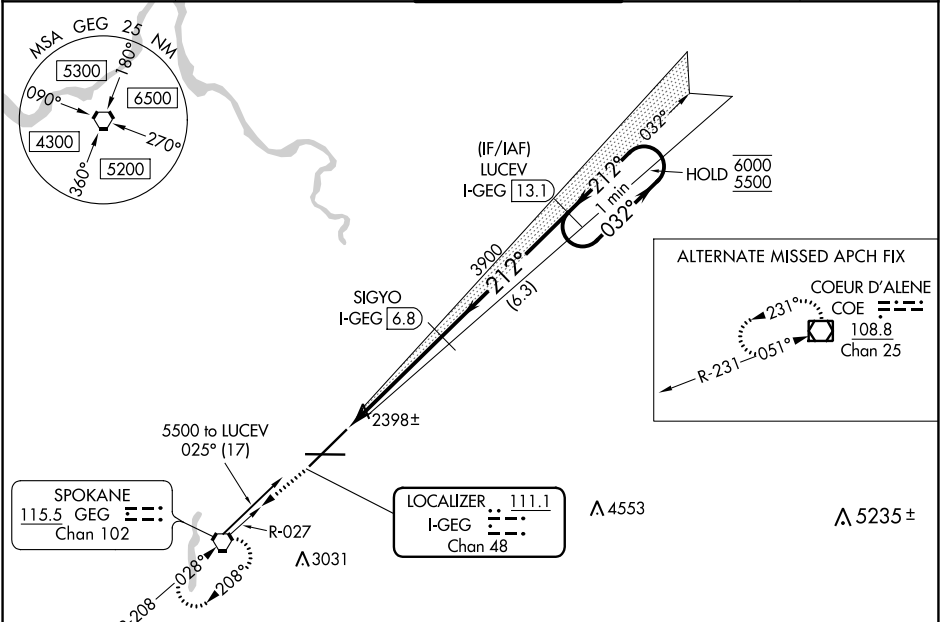


LOC/DME I-GEG	APP CRS	Rwy Idg	11002
111.1	212°	TDZE	2346
Chan 48		Apt Elev	2385

ILS RWY 21 (SA CAT I)
SPOKANE INTL (GEG)

DME required.	ALSIF-2	MISSED APPROACH: Climb to 4200 on GEG VORTAC R-027 to GEG VORTAC and hold.
Requires specific OPSPEC, MSPEC, or LOA approval and use of HUD to DH.		

ATIS	SPOKANE APP CON	SPOKANE TOWER	GND CON	CLNC DEL
124.325 254.375	123.75 282.25 (205°-025°) 133.35 263.0 (026°-204°)	118.3 278.3	121.9 348.6	127.55



SA CATEGORY I ILS - SPECIAL AIRCREW
& AIRCRAFT CERTIFICATION REQUIRED

NW-1, 31 DEC 2020 to 28 JAN 2021

NW-1, 31 DEC 2020 to 28 JAN 2021