

| | | | |
|---------------|---------|----------|------|
| LOC/DME I-FLZ | APP CRS | Rwy Idg | 4499 |
| 111.7 | 221° | TDZE | 1957 |
| Chan 54 | | Apt Elev | 1957 |

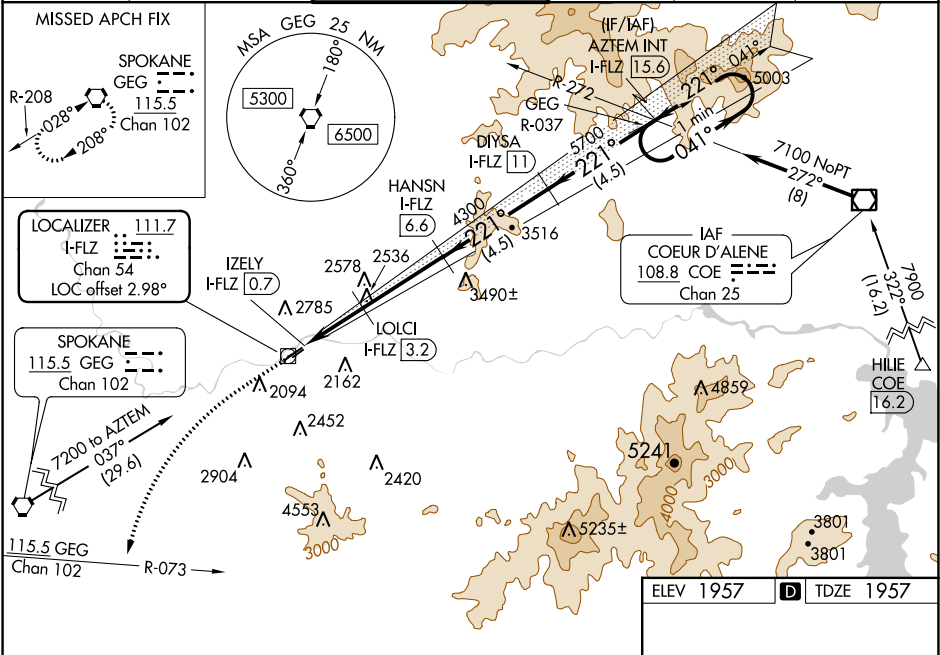
ILS or LOC RWY 22R
FELTS FIELD (SFF)

⚠ Inop table does not apply to S-ILS all Cats. Circling NA northwest of Rwy 4L-22R. DME required. Helicopter visibility reduction below ¾ SM NA. When local altimeter setting not received, use Spokane Intl altimeter setting **-16°C** and increase all DA 82 feet and all MDA 100 feet; and increase S-LOC Cat C visibility ⅓ and Circling Cat C visibility ¼. For inop MALSR, increase S-LOC Cat A visibility to 1 and Cat C visibility to 2½.

MALSR

MISSED APPROACH: Climb to 3300 then climbing left turn to 5000 on heading 200° and on GEG VORTAC R-073 to GEG VORTAC and hold.

| | | | | | |
|-----------------------|--|--|-------------------------|--------------------------|-------------------------|
| ATIS 120.55 | SPOKANE APP CON 133.35 263.0 | FELTS TOWER ★ 132.5 (CTAF) 239.025 | GND CON 121.7 | CLNC DEL 121.7 | UNICOM 122.95 |
|-----------------------|--|--|-------------------------|--------------------------|-------------------------|



| | | | |
|------|----------|-------|-----|
| 3300 | 5000 | GEG | GEG |
| ↑ | hdg 200° | R-073 | |

* LOC only

IZELY I-FLZ [0.7]

LOLCI I-FLZ [3.2]

HANSN I-FLZ [6.6]

DIYSA I-FLZ [11]

AZTEM INT I-FLZ [15.6]

One Minute Holding Pattern

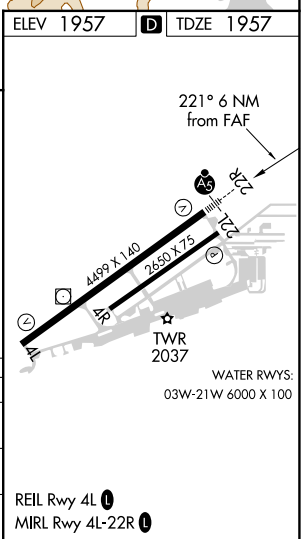
221° 041°

7100

GS 3.60° TCH 43

0.1 2.5 NM 3.4 NM 4.5 NM 4.5 NM

| | | | | |
|-----------|----------------------|----------------------|----|---|
| CATEGORY | A | B | C | D |
| S-ILS 22R | 2227-¾ 270 (300-¾) | 2227-1⅞ 270 (300-1⅞) | NA | |
| S-LOC 22R | 2800-¾ 843 (900-¾) | 2800-1⅞ 843 (900-1⅞) | NA | |
| CIRCLING | 2800-1¼ 843 (900-1¼) | 3020-3 1063 (1100-3) | NA | |



NW-1, 31 DEC 2020 to 28 JAN 2021

NW-1, 31 DEC 2020 to 28 JAN 2021