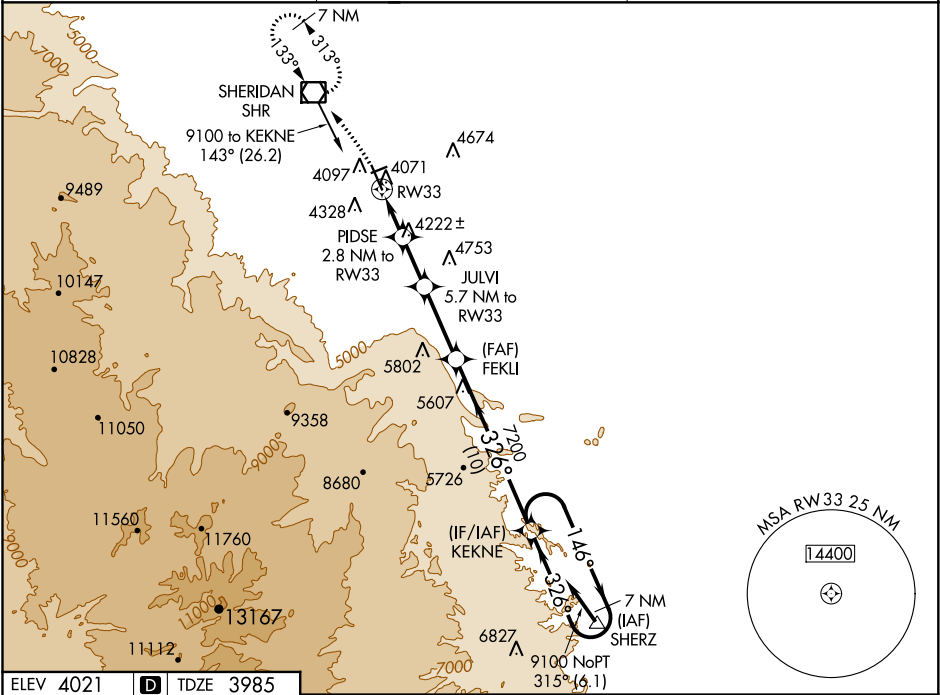


WAAS CH 65699 W33A	APP CRS 326°	Rwy Idg 8301 TDZE 3985 Apt Elev 4021
--	------------------------	---

RNAV (GPS) RWY 33
SHERIDAN COUNTY (SHR)

▼ ▲ ☼ -19°C	For uncompensated Baro-VNAV systems, LNAV/VNAV NA below -26°C (-14°F) or above 51°C (124°F). When local altimeter setting not received, procedure NA. DME/DME RNP-0.3 NA. Night landing: Rwy 24 NA.	MALSR 	MISSED APPROACH: Climbing left turn to 7300 direct SHR VOR/DME and hold, continue climb-in-hold to 7300.
--	---	-----------	--

ASOS 135.175	SALT LAKE CENTER 127.75 351.9	UNICOM 123.0 (CTAF) 0
------------------------	---	---------------------------------



ELEV 4021	D	TDZE 3985
7300 SHR VGS1 and RNAV glidepath not coincident (VGS1 Angle 3.00/TCH 53).		
*LNAV only *1.1 NM to RW33		
RW33 4920* 5840* 7200 9100		
1.1 1.7 NM 2.9 NM 4.3 NM 10 NM		
CATEGORY	A	B C D
LPV DA	4205-1/2	220 (200-1/2)
LNAV/VNAV DA	4355-3/4	370 (400-3/4)
LNAV MDA	4380-1/2 395 (400-1/2)	4380-5/8 395 (400-5/8)
CIRCLING	4600-1 579 (600-1)	4640-1 619 (700-1) 4860-2 1/2 839 (900-2 1/2) 5220-3 1199 (1200-3)

NW-1, 31 DEC 2020 to 28 JAN 2021

NW-1, 31 DEC 2020 to 28 JAN 2021