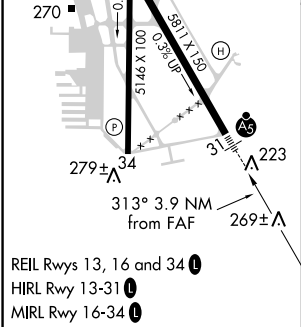
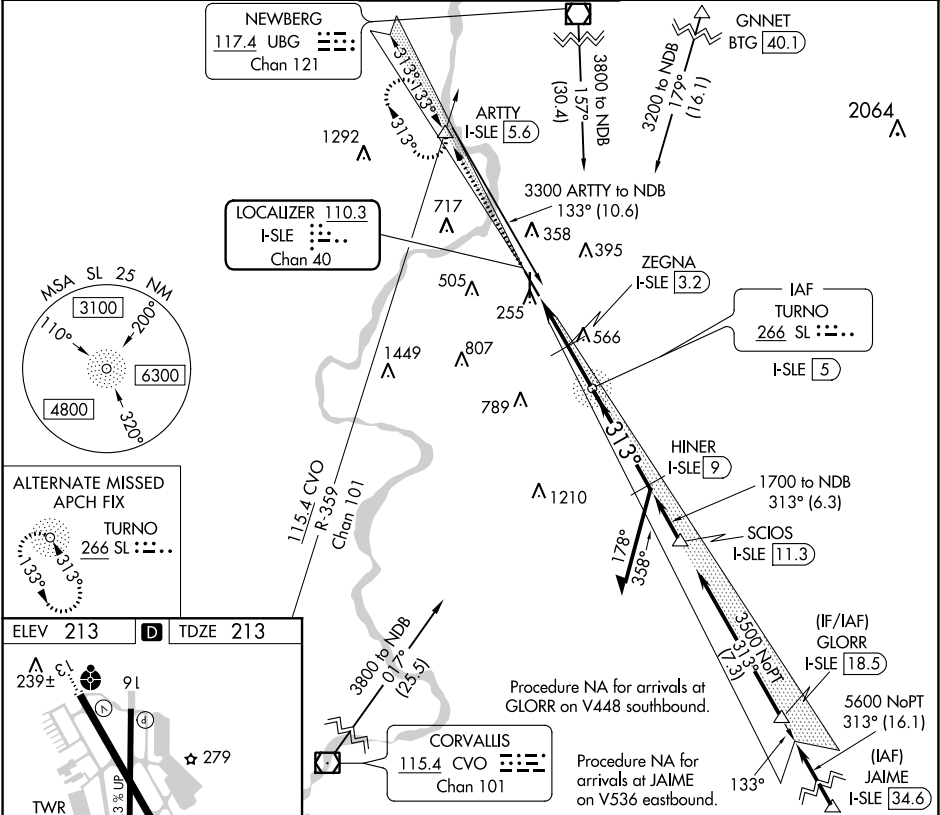


LOC/DME I-SLE 110.3 Chan 40	APP CRS 313°	Rwy Idg 5811 TDZE 213 Apt Elev 213
---	------------------------	---

LOC Y RWY 31
MCNARY FIELD (SLE)

DME required. RADAR required.		MALSR	MISSED APPROACH: Climb to 4000 on I-SLE Localizer NW course (313°) to ARTTY INT/I-SLE 5.6 DME and hold, continue climb-in-hold to 4000.
When local altimeter setting not received, use Mc Minnville altimeter setting and increase all MDAs 60 feet and visibility S-LOC 31 Cat C/D ½ SM and Circling Cat C ¼ SM. For inop ALS, increase S-LOC 31 Cats C and D visibility to 1½ SM. For inop ALS when using Mc Minnville altimeter setting, increase S-LOC 31 Cats C and D visibility to 1¾ SM. VDP NA when using Mc Minnville altimeter setting.			

ATIS 124.55	SEATTLE CENTER 125.8 291.7	SALEM TOWER ★ 119.1 (CTAF) 0 257.2	GND CON 121.9	UNICOM 122.95
-----------------------	--------------------------------------	--	-------------------------	-------------------------



ELEV 213 TDZE 213		ARTTY I-SLE NW crs (313°)		ZEGNA I-SLE 3.2		HINER I-SLE 9	
4000		*1080 when using Mc Minnville altimeter setting.		SL NDB I-SLE 5		Remain within 10 NM	
1.4 NM		0.7 NM		1.8 NM		4 NM	
CATEGORY		A		B		C	
S-LOC 31		780/24		567 (600-½)		780-1¼ 567 (600-1¼)	
CIRCLING		900-1		960-1		1060-2½ 1260-3	
		687 (700-1)		747 (800-1)		847 (900-2½) 1047 (1100-3)	