

ILS or LOC Z RWY 31
MCNARY FIELD (SLE)

MALSR

MISSED APPROACH: Climb to 4000 on I-SLE Localizer NW course to ARTTY INT/I-SLE 5.6 DME and hold, continue climb-in-hold to 4000.

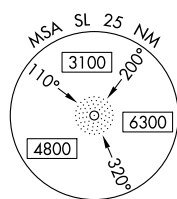
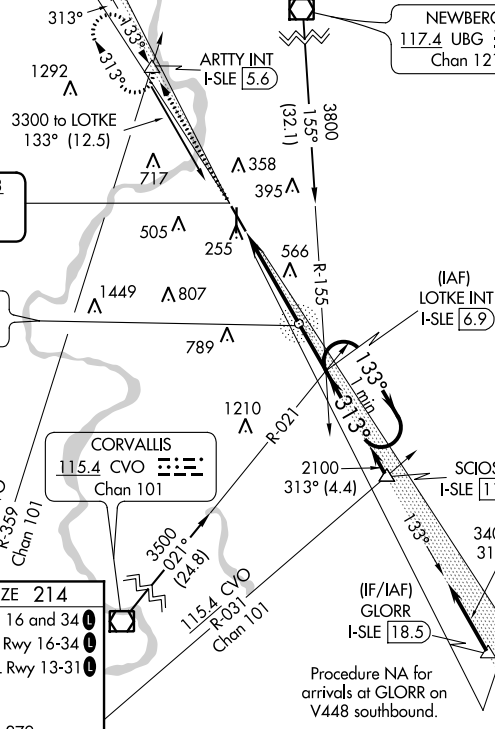
ALTERNATE MISSED
APCH FIX

TURN 0
366 SL ***



LOCALIZER 110.3
I-SLE : :
Chan 40

TURNO
266 SL ::..



NW-1, 31 DEC 2020 to 28 JAN 2021

NW-1. 31 DEC 2020 to 28 JAN 2021