

VOR/DME OCS	APP CRS	Rwy Idg	10000
116.0	255°	TDZE	6760
Chan 107		Apt Elev	6765

VOR/DME RWY 27

SOUTHWEST WYOMING RGNL (RKS)

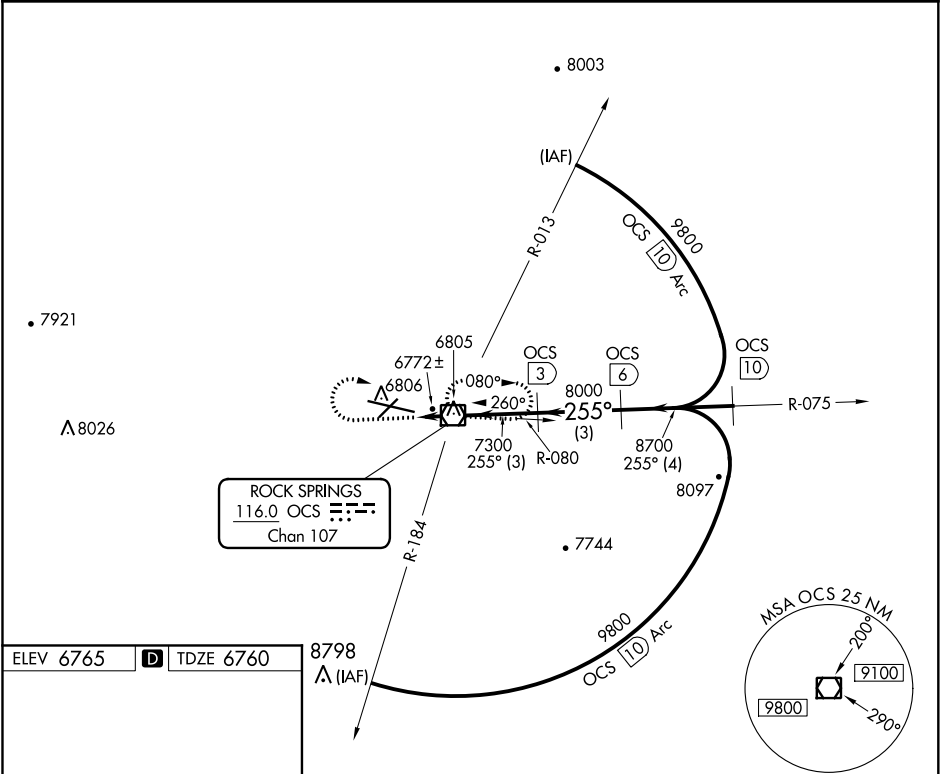
▼

Inoperative table does not apply to Cat D.

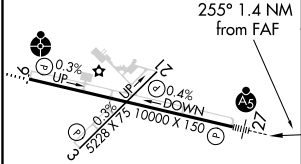
MALSR

MISSED APPROACH: Climb to 7700, then climbing right turn to 9100 direct OCS VOR/DME and hold.

ASOS 118,375	SALT LAKE CENTER 124,35 353,5	UNICOM 122.8 (CTAF) 0
-----------------	----------------------------------	--------------------------



ELEV 6765	D	TDZE 6760
-----------	---	-----------



MIRL Rwy 3-21
HIRL Rwy 9-27 0
REIL Rwy 3 and 21 0

7700	9100	OCS				
			OCS VOR/DME	OCS 3	OCS 6	OCS 10
			Procedure Turn NA			
1.4 NM			3 NM	3 NM	4 NM	
CATEGORY	A	B	C	D		
S-27	7040- 1/2 280 (300-1/2)					7040-1 280 (300-1)
CIRCLING	7140-1 375 (400-1)	7220-1 455 (500-1)	7220-1 1/2 455 (500-1 1/2)	NA		